



## High Path, SW19

£375,000

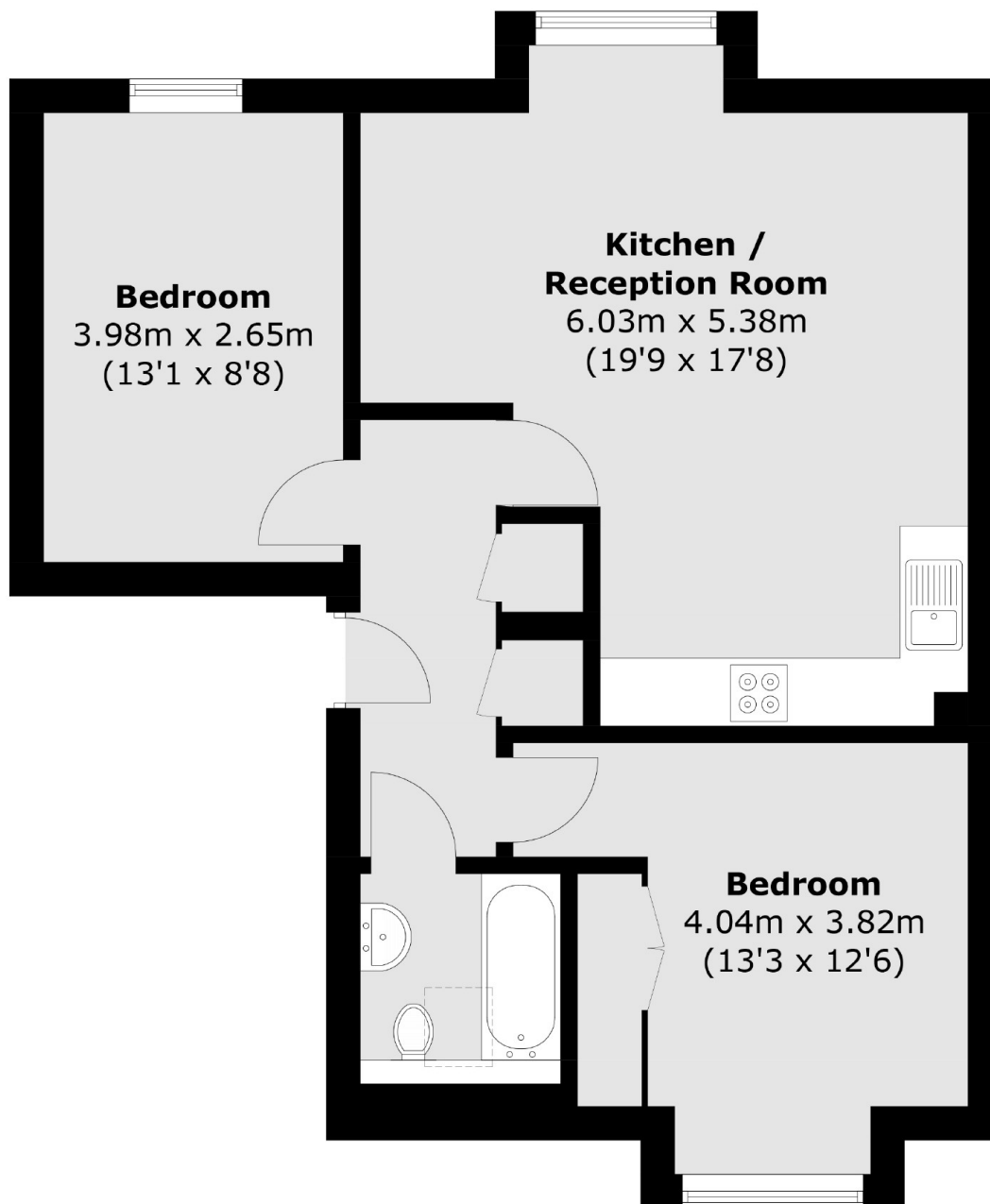
A bright and spacious two double bedroom, purpose built apartment. Set within a quiet development well situated for South Wimbledon Underground Station, this property is offered to the market with no onward chain.

High Path is a popular and convenient location between Wimbledon and Colliers Wood. It is minutes from M&S, Sainsbury's and Merton Abbey Mills with its wonderful selection of amenities.

### Features

- Two Double Bedrooms
- Purpose Built Apartment
- Good Condition
- Open Plan Kitchen/Living
- Communal Gardens
- No Onward Chain

# High Path, London, SW19



Total area (approx.): 60.6 sq. m (652.3 sq. ft)