



Cochrane Road, SW19

£799,950

A two bedroom end of terrace Victorian house with two off street parking spaces and a garage. The house has an open plan living and dining room, and huge potential to further extend in to the side, rear and in to the loft.

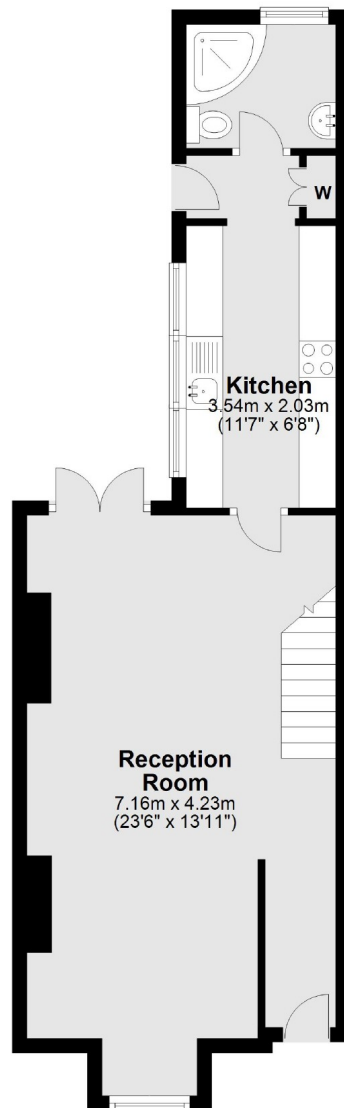
Cochrane Road is next to both Dundonald Primary School and Dundonald Park. Wimbledon Town Centre is just moments away with the district line tube, overground and an excellent choice of restaurants, bars and boutique shops.

Features

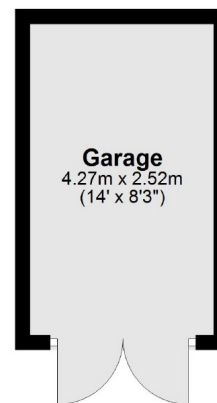
- Two Double Bedrooms
- Huge Extension Potential
- Side Access And Storage
- Two Parking Spaces
- Garage
- Outstanding Schools

Cochrane Road, London, SW19

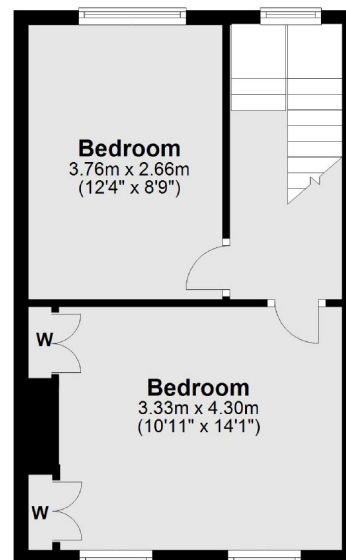
Ground Floor



Ground Floor



First Floor



Main area: Approx. 76.0 sq. metres (817.9 sq. feet)
Plus garages, approx. 10.8 sq. metres (115.7 sq. feet)

Contact

To arrange a viewing call our office on the number below or visit our website.



Regulated
Estate Agent
and Letting Agent

Energy Rating: E. We aim to make our particulars both accurate and reliable. However they are not guaranteed; nor do they form part of an offer or contract. If you require clarification on any points then please contact us, especially if you're traveling some distance to view. Please note that appliances and heating systems have not been tested and therefore no warranties can be given as to their good working order.