



Windermere Avenue, SW19

£4,000 Per calendar month

A detached four bedroom, two bathroom house with two reception rooms, a conservatory and large eat-in kitchen/dining room on the ground floor, there is also off-street parking.

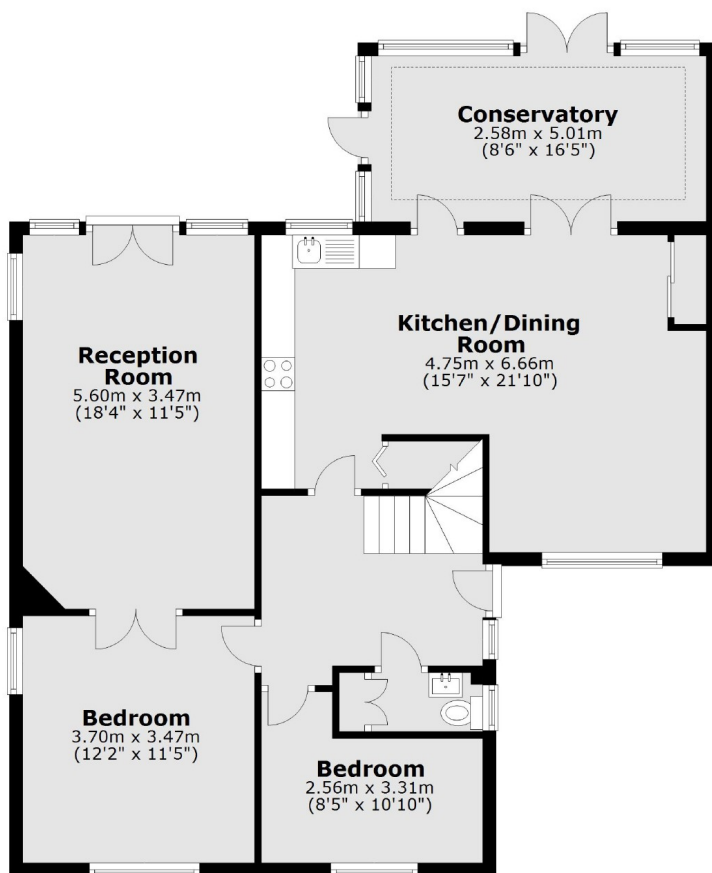
Windermere Avenue is a quiet, leafy location benefiting from excellent nearby transport links. The property lies within the catchment area for Merton Park and Poplar Primary School, and is close to Old Ruts Rugby Club.

Features

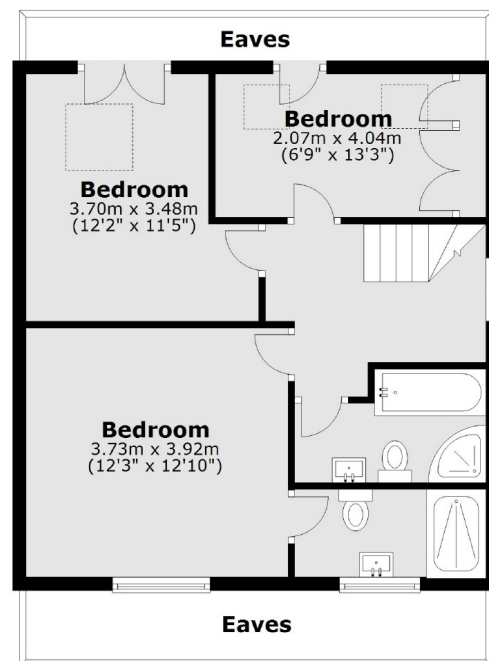
- Four Bedrooms
- Detached
- Driveway
- Two Bathrooms
- Eat-in Kitchen
- Merton Park

Windermere Avenue, London, SW19

Ground Floor



First Floor



Total area: approx. 145.8 sq. metres (1569.5 sq. feet)