



## Coombe Lane, SW20

Per calendar month

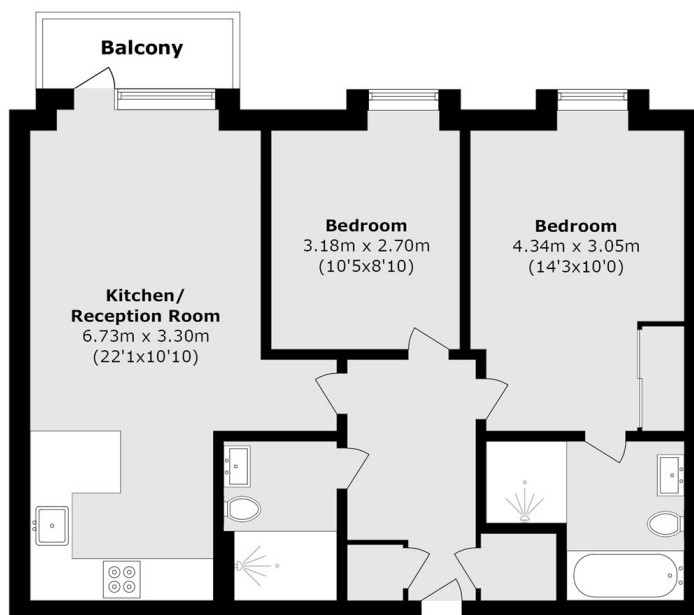
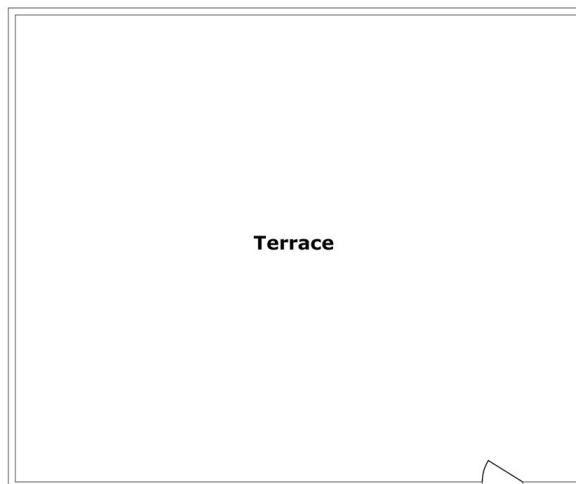
A well presented two bedroom apartment that is 0.2 miles from Raynes Park Station. The property has a bright open plan kitchen/reception room with private balcony, a main bedroom with en-suite, a further double bedroom, a family bathroom and roof terrace.

Spitfire House is moments from Raynes Park Station and all the local shops, cafés and restaurants, along with a Waitrose Supermarket.

### Features

- Two Bedrooms
- Two Bathrooms
- Private Balcony
- Parking
- Roof Terrace
- Communal Gym

# Coombe Lane, London, SW20



Total area (approx.): 64.2 sq. m (691.0 sq. ft)  
(Excluding Balcony)  
Balcony/Terrace area (approx.): 56.9 sq. m (612.4 sq. ft)