

## Home Park Road, SW19

### £399,950

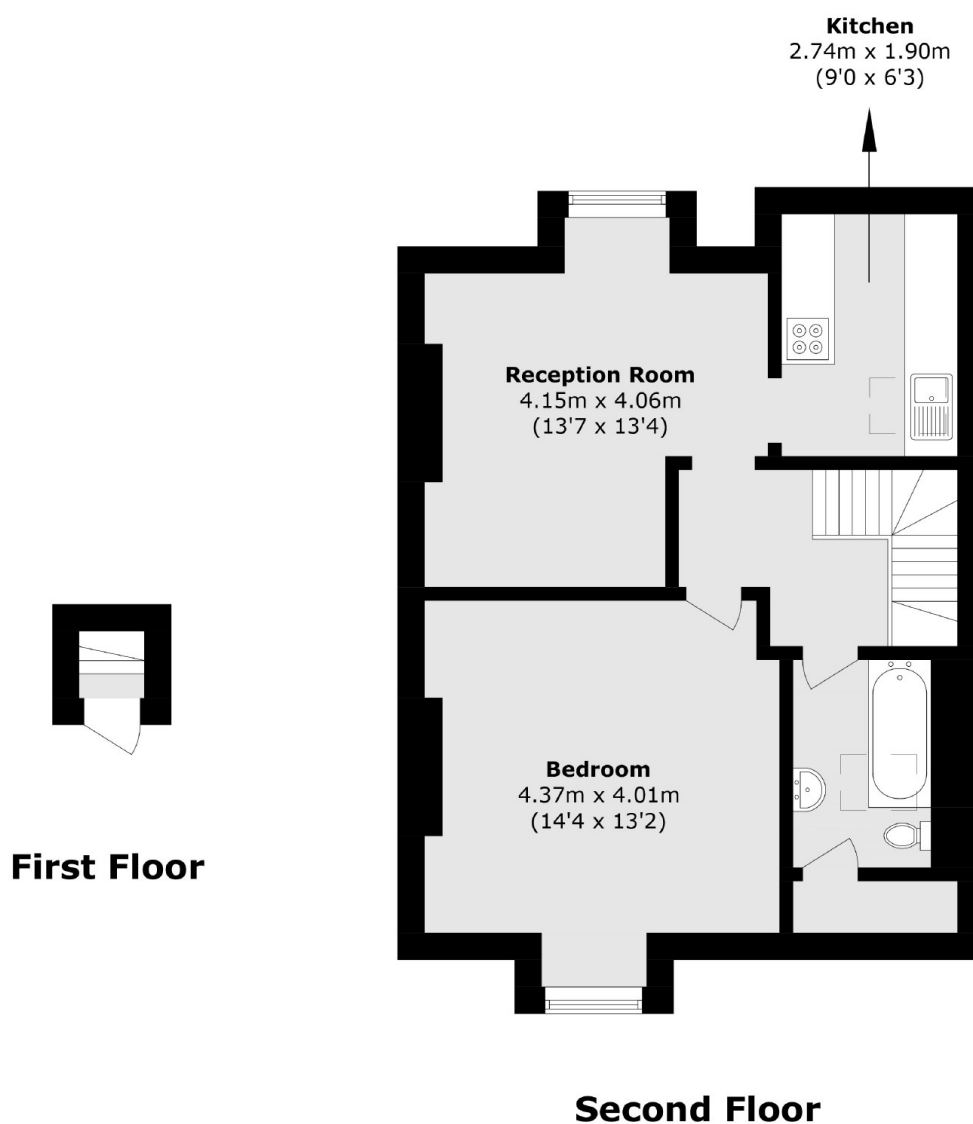
A top floor period conversion apartment, with incredible views. There is a separate kitchen, a modern bathroom and a large double bedroom.

Located just around the corner from Wimbledon Village and Leopold Parade with its boutique cafés, shops and bars. Both Wimbledon Park and Wimbledon Town Centre are nearby, with District line and overground services.

### Features

- Top Floor
- Exceptional Views
- Edwardian Conversion
- Vaulted Ceilings
- Near 520 Square Feet
- Near The District Line

# Home Park Road, London, SW19



Total area (approx.): 48.2 sq. m (518.8 sq. ft)

## Dexters

Wimbledon  
12 The Broadway  
London  
SW19 1RF  
Sales  
020 8545 8580

Energy Rating: E. We aim to make our particulars both accurate and reliable. However they are not guaranteed; nor do they form part of an offer or contract. If you require clarification on any points then please contact us, especially if you're traveling some distance to view. Please note that appliances and heating systems have not been tested and therefore no warranties can be given as to their good working order.

 **RICS** | Regulated  
Estate Agent  
and Letting Agent

[dexters.co.uk](https://www.dexters.co.uk)