



## Cannon Hill Lane, SW20

£2,750 Per calendar month

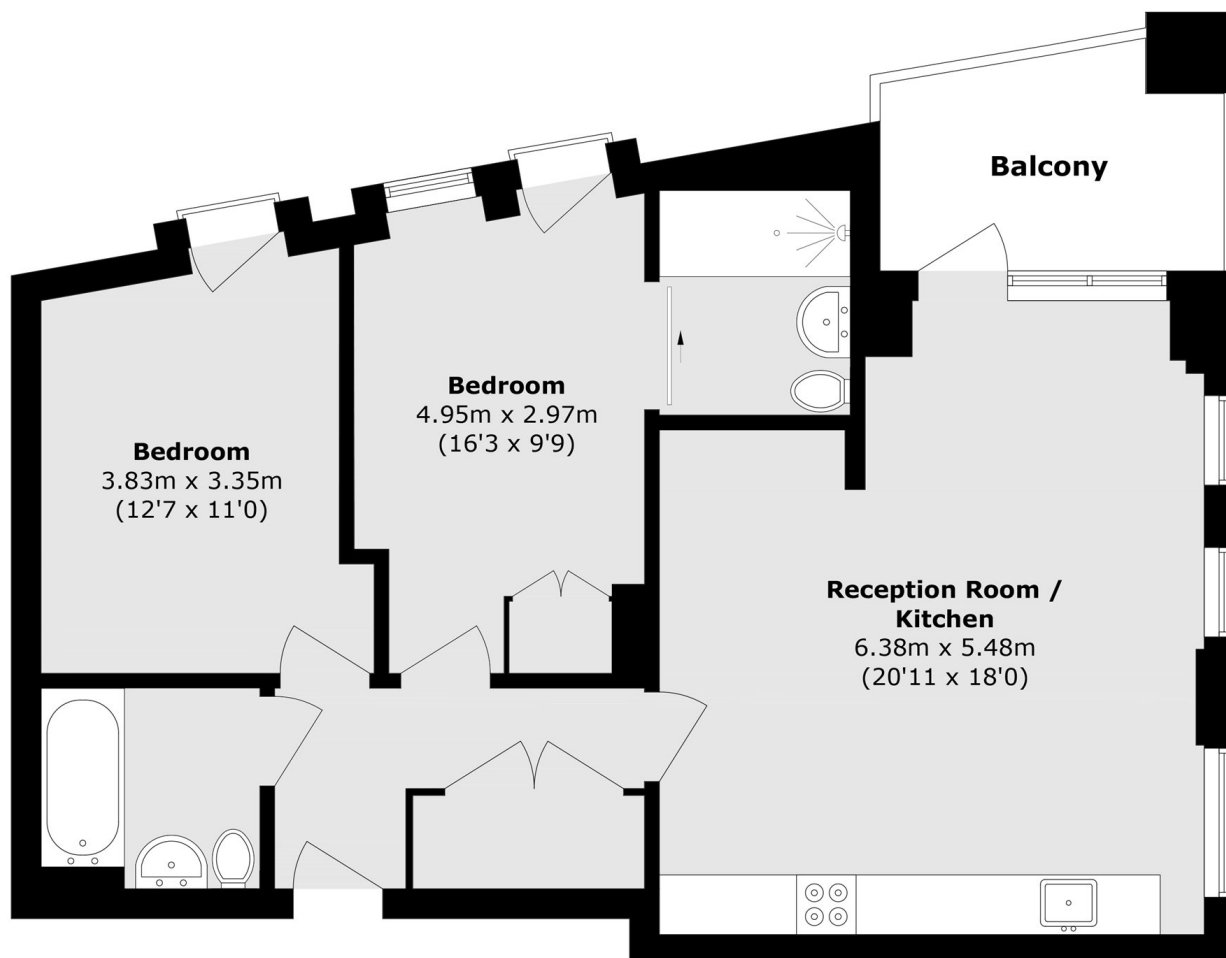
This brand new two bedroom, two bathroom apartment has been finished to a high standard throughout. The property has a great open plan entertaining space that leads to a private balcony, two double bedrooms and modern bathroom.

The apartment is close to the open spaces of Cannon Hill Common and the excellent facilities at David Lloyd Raynes Park, as well as the array of shops, cafés and restaurants that Raynes Park and Wimbledon offer.

### Features

- New Build Development
- Two Double Bedrooms
- Two Bathrooms
- Open Plan Reception
- Private Balcony
- Cycle Store

# Cannon Hill Lane, LONDON, SW20



Total area (approx.): 78.5 sq. m (844.9 sq. ft)

Balcony area (approx.): 7.0 sq. m (75.3 sq. ft)