

## Cannon Hill Lane, SW20

£1,950 Per calendar month

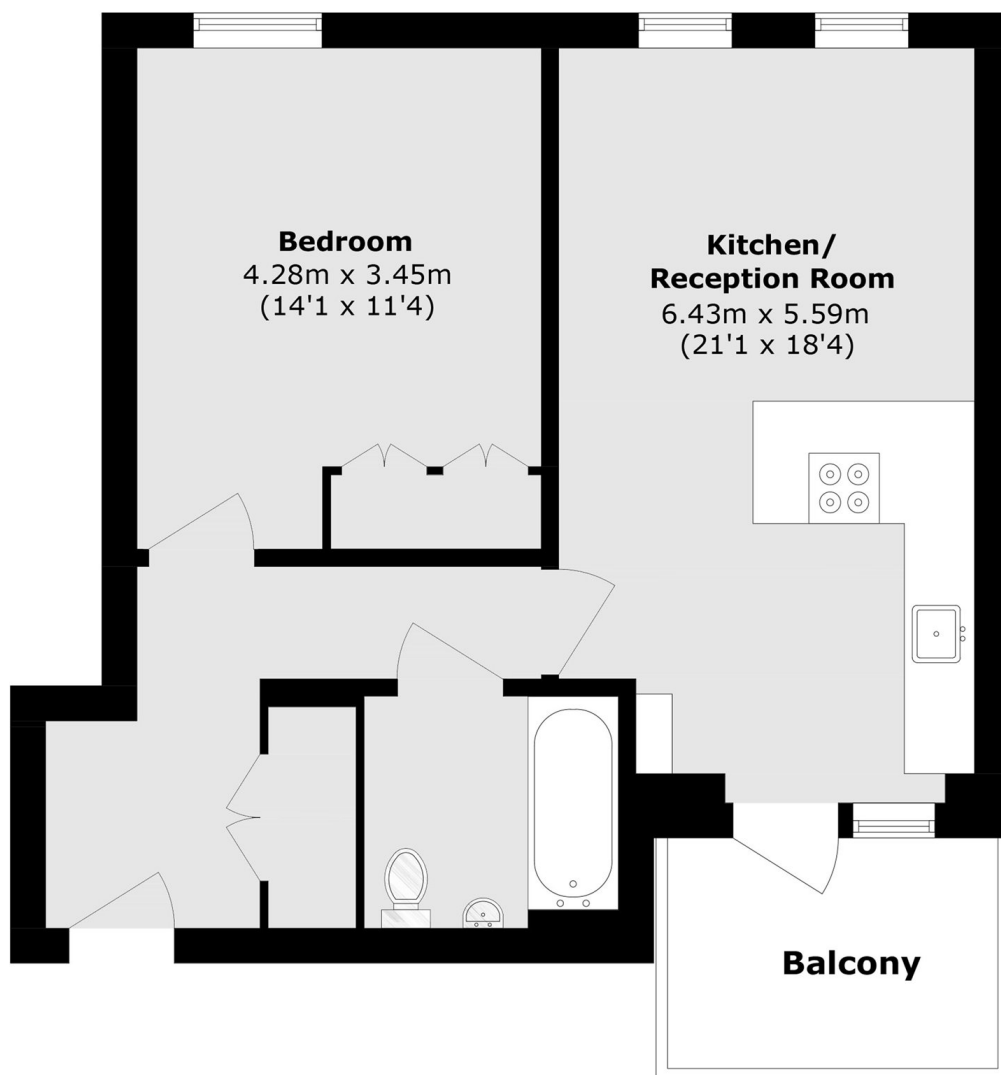
This brand new one bedroom apartment has been finished to a high standard throughout. The property has a great open plan entertaining space with breakfast bar, a private balcony, double bedroom with built in wardrobes and modern bathroom.

The apartment is close to the open spaces of Cannon Hill Common and the excellent facilities at David Lloyd Raynes Park, as well as the array of shops, cafés and restaurants that Raynes Park and Wimbledon offer.

### Features

- New Build Development
- One Bedroom
- Open Plan Reception
- Private Balcony
- Second Floor
- Cycle Store

# Cannon Hill Lane, LONDON, SW20



Total area (approx.): 51.8 sq. m (557.5 sq. ft)

Balcony area (approx.): 5.5 sq. m (59.2 sq. ft)