



Buckleigh Avenue, SW20

£2,300 Per calendar month

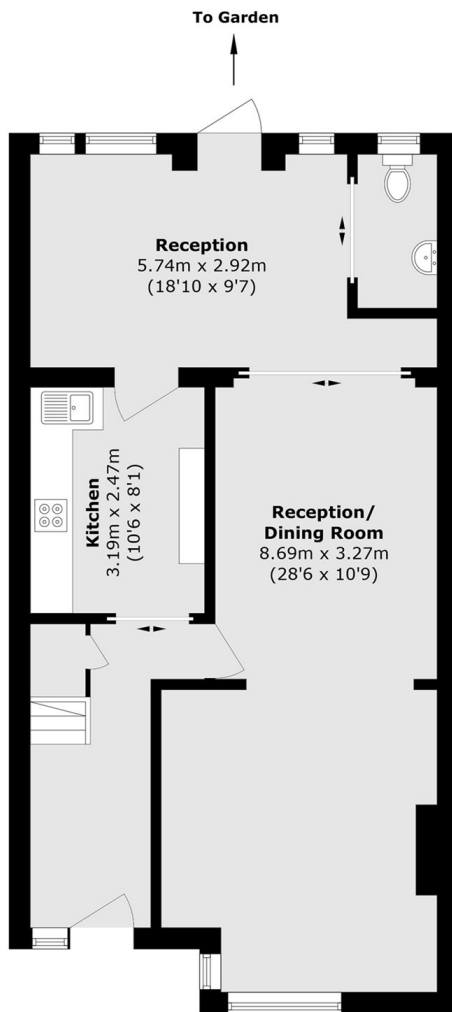
This spacious three bedroom house is situated on a quiet residential road in Raynes Park. It offers excellent entertaining space, including a generous double reception room, a separate kitchen, and a dining area that opens directly onto a private garden.

Buckleigh Avenue is close to both Wimbledon Chase and South Merton Stations, along with all the shops, cafés and restaurants that these areas offer.

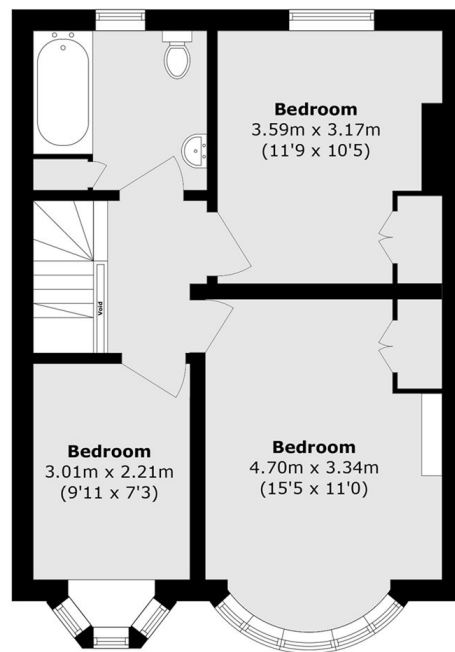
Features

- Three Bedroom House
- Double Reception Room
- Separate Kitchen
- Off Street Parking
- Private Garden
- Garage

Buckleigh Avenue, London, SW20



Ground Floor



First Floor

Total area (approx.): 111.1 sq. m (1195.8 sq. ft)