



Belvedere Grove, SW19

£785,000

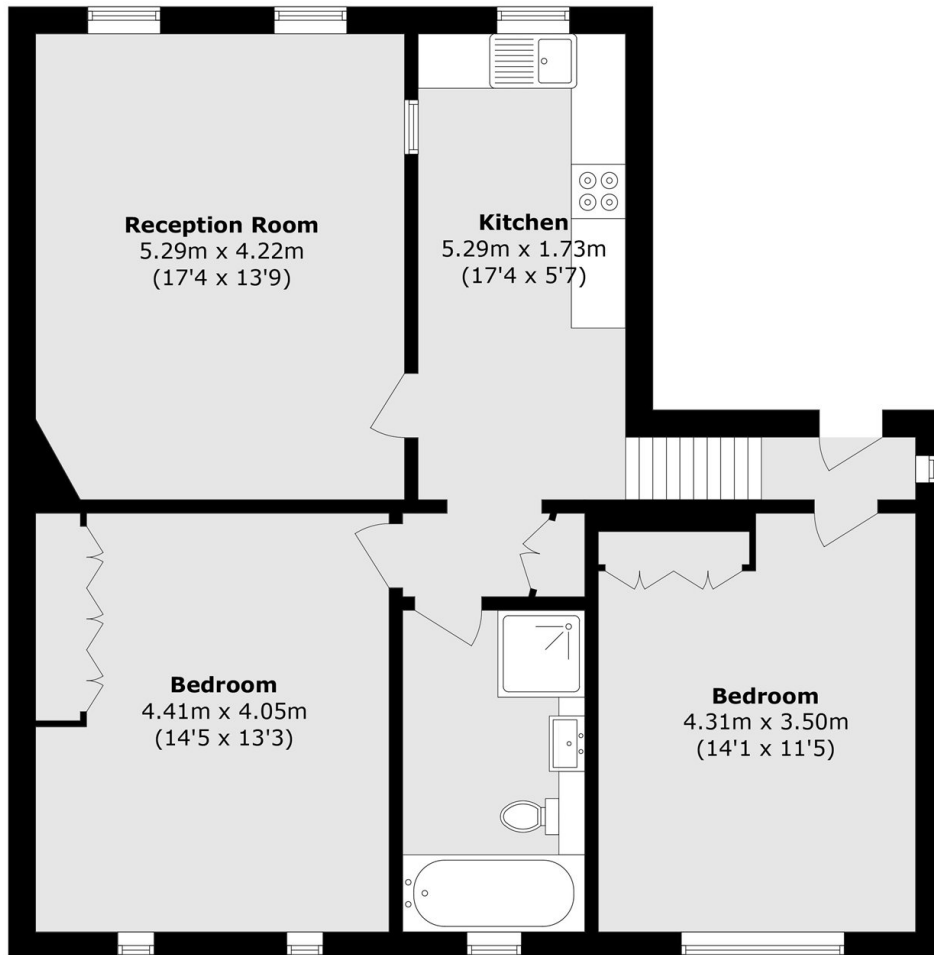
A two double bedroom apartment, located on the first floor of an Edwardian converted house. The property is sold with the ability to park off street, a private rear garden, a share of freehold and no onward chain.

Perfectly centrally located within Wimbledon Village, beside The Common. Restaurants and exceptional bars on the doorstep of this apartment create a cosmopolitan style atmosphere to live in, with transport just moments away.

Features

- Two Double Bedrooms
- Off Street Parking
- Private 40 Foot Garden
- Share Of Freehold
- Central Wimbledon Village
- No Onward Chain

Belvedere Grove, London, SW19



Total area (approx.): 82.0 sq. m (882.6 sq. ft)