



Durnsford Road, SW19

£375,000

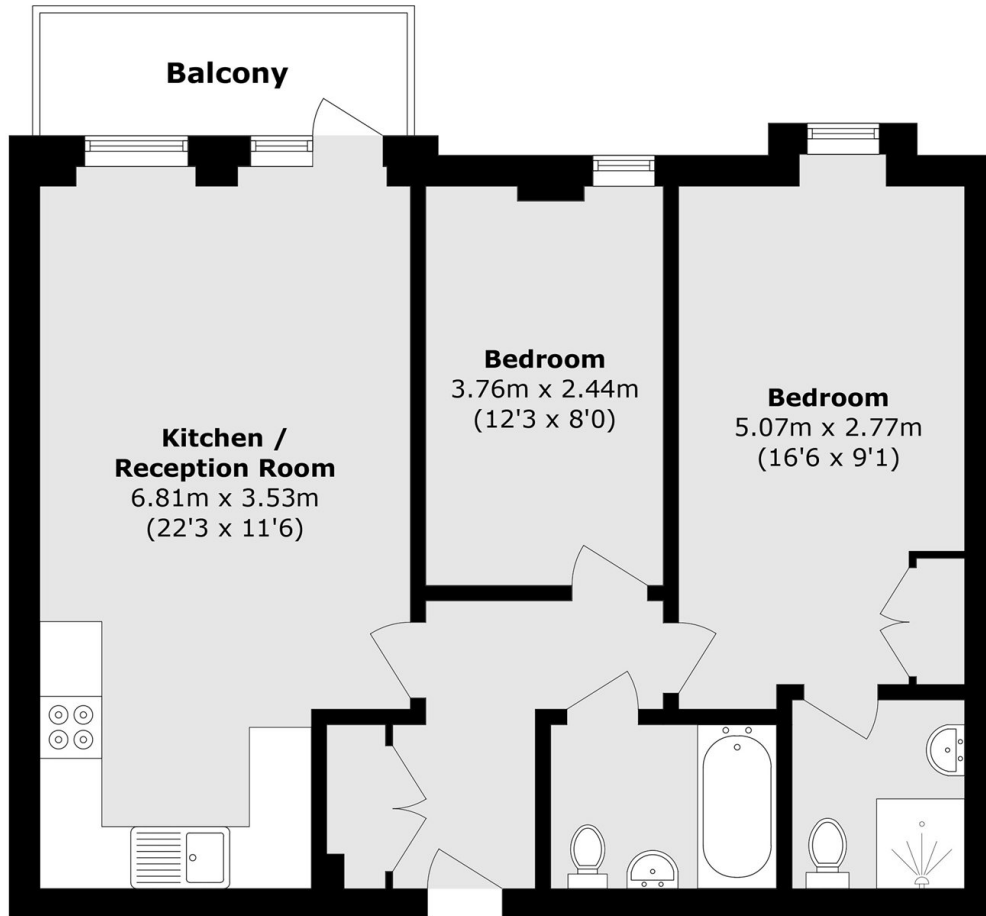
A two double bedroom two bathroom apartment located on the upper ground floor with its own private balcony. Complete with secured underground allocated parking and communal gardens.

Ideally located within close proximity of Wimbledon Park and an outstanding primary school. There's easy access to both Earlsfield and Southfields where there are excellent transport links and a huge variety of shops, bars and restaurants.

Features

- Two Double Bedrooms
- Two Bathrooms
- Private Balcony
- Communal Gardens
- Modern Development
- Allocated Parking

Durnsford Road, London, SW19



Total area (approx.): 62.0 sq. m (667.4 sq. ft)

Balcony area (approx.): 4.2 sq. m (45.2 sq. ft)

Dexters

Wimbledon
12 The Broadway
London
SW19 1RF
Sales
020 8545 8580

Energy Rating: D. We aim to make our particulars both accurate and reliable. However they are not guaranteed; nor do they form part of an offer or contract. If you require clarification on any points then please contact us, especially if you're traveling some distance to view. Please note that appliances and heating systems have not been tested and therefore no warranties can be given as to their good working order.

 **RICS** | Regulated
Estate Agent
and Letting Agent

[dexters.co.uk](https://www.dexters.co.uk)