



Burgess Mews, SW19

£2,750 Per calendar month

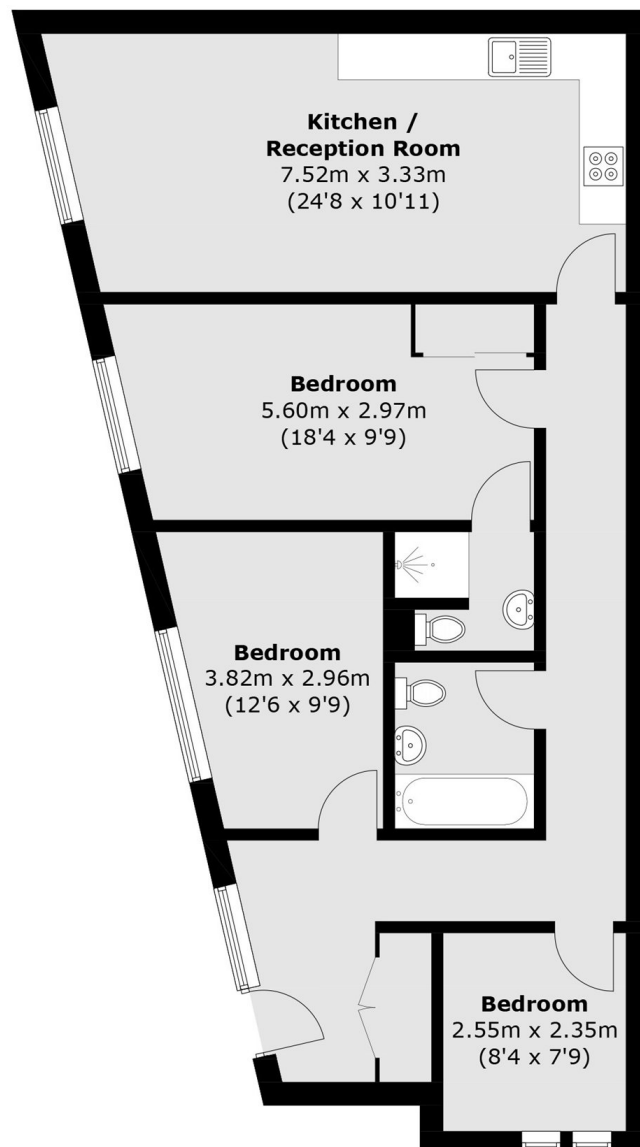
A ground floor, gated, three bedroom, two bathroom, semi detached home. There are incredibly high ceilings, open plan kitchen reception and a gated parking space.

Burgess Mews is a gated development located in a sought after area of Wimbledon. Close to Wimbledon Broadway and equidistant to the District, Northern line tube and a vibrant range of shops, bars, restaurants and a theatre.

Features

- Three Bedrooms
- Two Bathrooms
- Gated Development
- Allocated Parking Space
- Central Location
- Near 90 Square Meters

Burgess Mews, London, SW19



Total area (approx.): 82.1 sq. m (883.7 sq. ft)