



Home Park Road, SW19

£4,000 Per calendar month

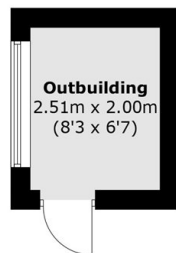
A well presented three/four bedroom house that has been finished to a very high standard throughout and has a private rear garden with a hot tub.

Lynx Terrace is a collective of newly built houses in one of the most sought after spots in Wimbledon and is moments away from Wimbledon Park.

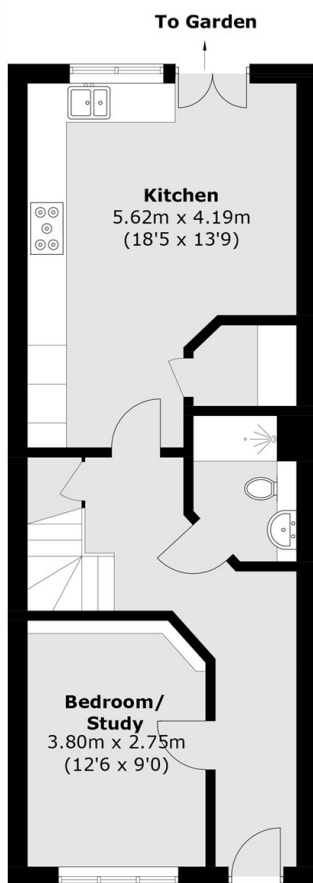
Features

- Three/Four Bedrooms
- Eat-in Kitchen
- Modern House
- Hot Tub
- Three Bathrooms
- Close to Transport

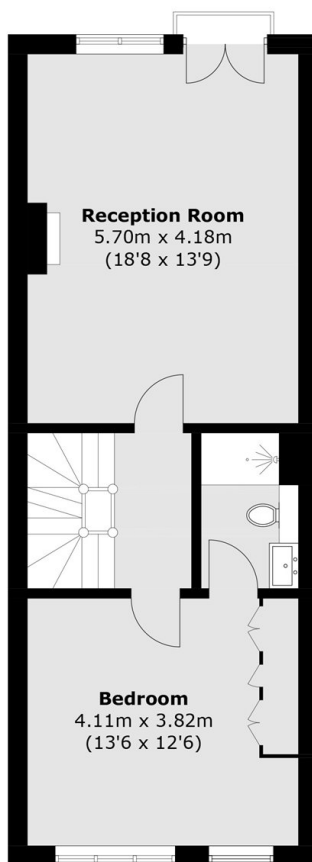
Home Park Road, London, SW19



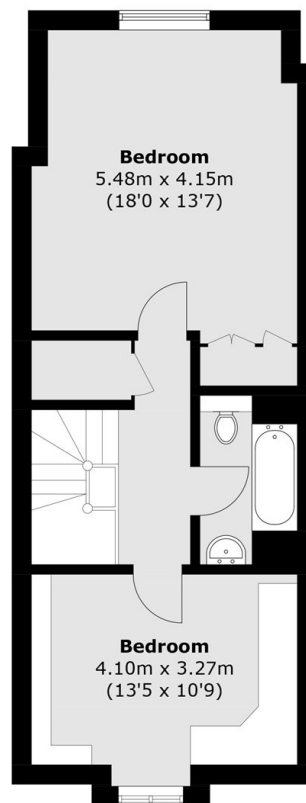
(Not Shown In Actual
Location / Orientation)



Ground Floor



First Floor



Second Floor

Total area (approx.): 148.0 sq. m (1,593.1 sq. ft)
Outbuilding area : 5.1 sq. m (54.9 sq. ft)