



Barton Mews, SW19

£950,000

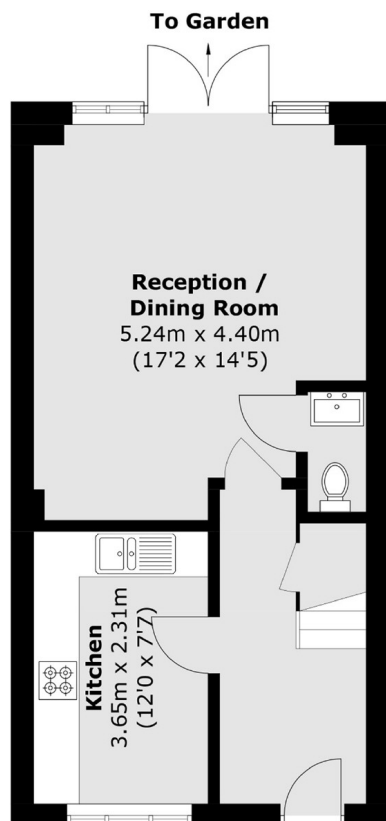
A three double bedroom, two bathroom terrace house, located within a gated development in South Park Gardens. There is an off street parking space and a great sized garden.

Nestled in the highly regarded 'South Park Gardens' grid, offering quick access to Wimbledon Town Centre, district and northern line tube and Haydons Road Thames Link. There are also a number of outstanding Primary Schools nearby.

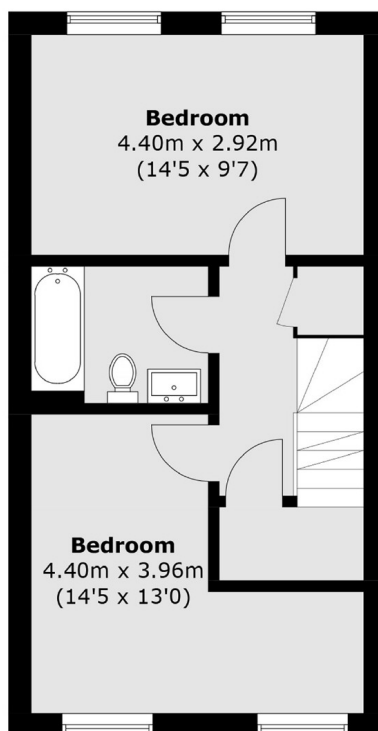
Features

- Three Double Bedrooms
- Two Bathrooms
- Off Street Parking
- Private Gated Development
- South Park Gardens
- Great Sized Garden

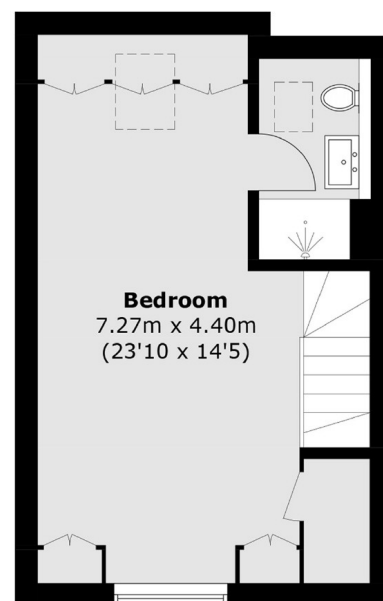
Barton Mews, Wimbledon, SW19



Ground Floor



First Floor



Second Floor

Total area (approx.): 111 sq. m (1,194.9 sq. ft)