



Kingston Road, SW20

£2,400 Per calendar month

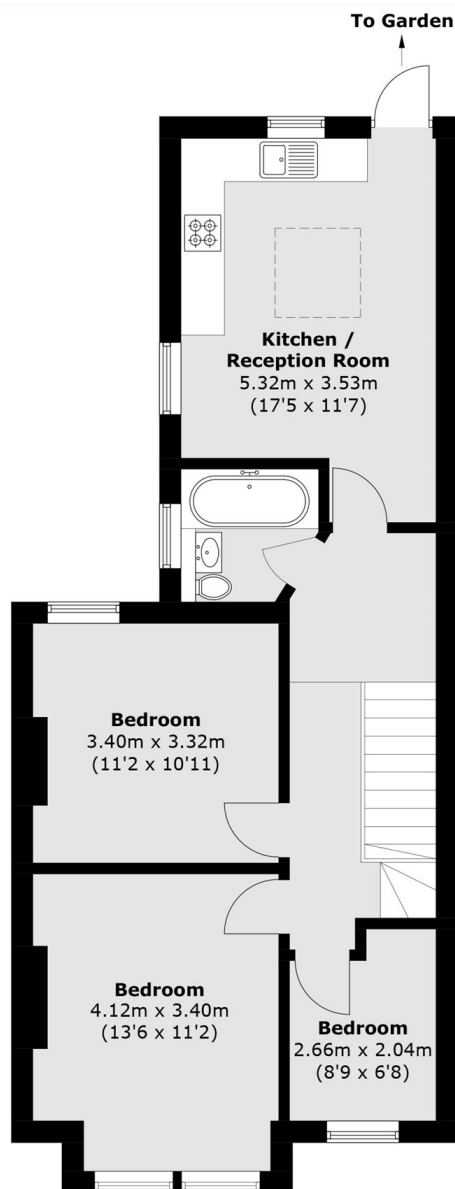
A beautifully refurbished Edwardian split-level three-bedroom maisonette, effortlessly blending timeless character with contemporary style. The spacious front living room is bathed in natural light, offering an inviting space to relax or entertain, while the sleek, dine-in kitchen at the rear with access directly into a private garden, perfect for alfresco dining and summer gatherings. Upstairs, the expansive primary bedroom with a luxurious en-suite provides a tranquil retreat, completing this exceptional home.

The Property is a short distance from Wimbledon Chase, Raynes Park station, David Lloyd gym and all of the local amenities of Raynes Park that include a Waitrose supermarket.

Features

- Three Bedroom
- Split Level
- Maisonette
- Private Garden
- Refurbished
- Dine-In Kitchen

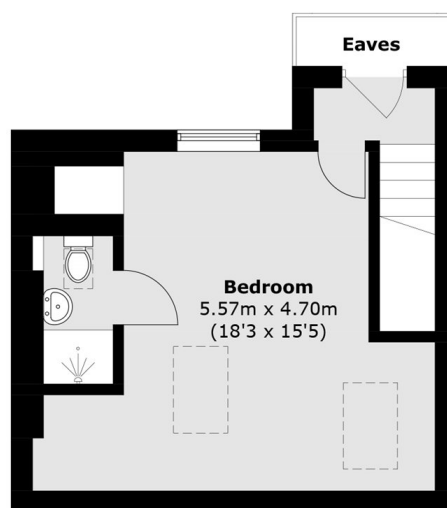
Kingston Road, London, SW20



First Floor



Ground Floor



Second Floor

Total area (approx.): 95.5 sq. m (1,027.9 sq. ft)
(Excluding eaves)