



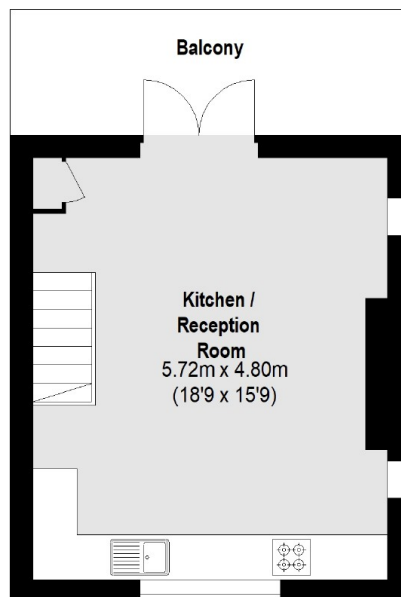
## Wilton Crescent, SW19

£2,750 Per calendar month

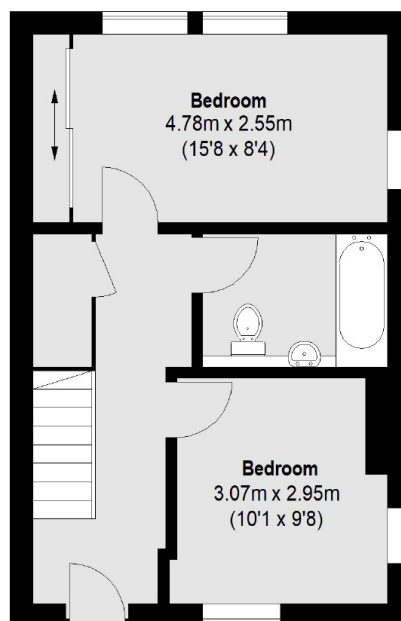
### Features

Wilton Crescent a lovely tree lined road within a sought after conservation area. There is excellent transport links nearby and Wimbledon town centre is close by, with a superb selection of High Street branded shops, bars and restaurants.

# Wilton Crescent, London, SW19



First Floor



Ground Floor

Total area (approx.): 64.81 sq. m (698 Sq. ft)  
Balcony: 9.18 sq. m (99 Sq. ft)