



## Home Park Road, SW19

### £750,000

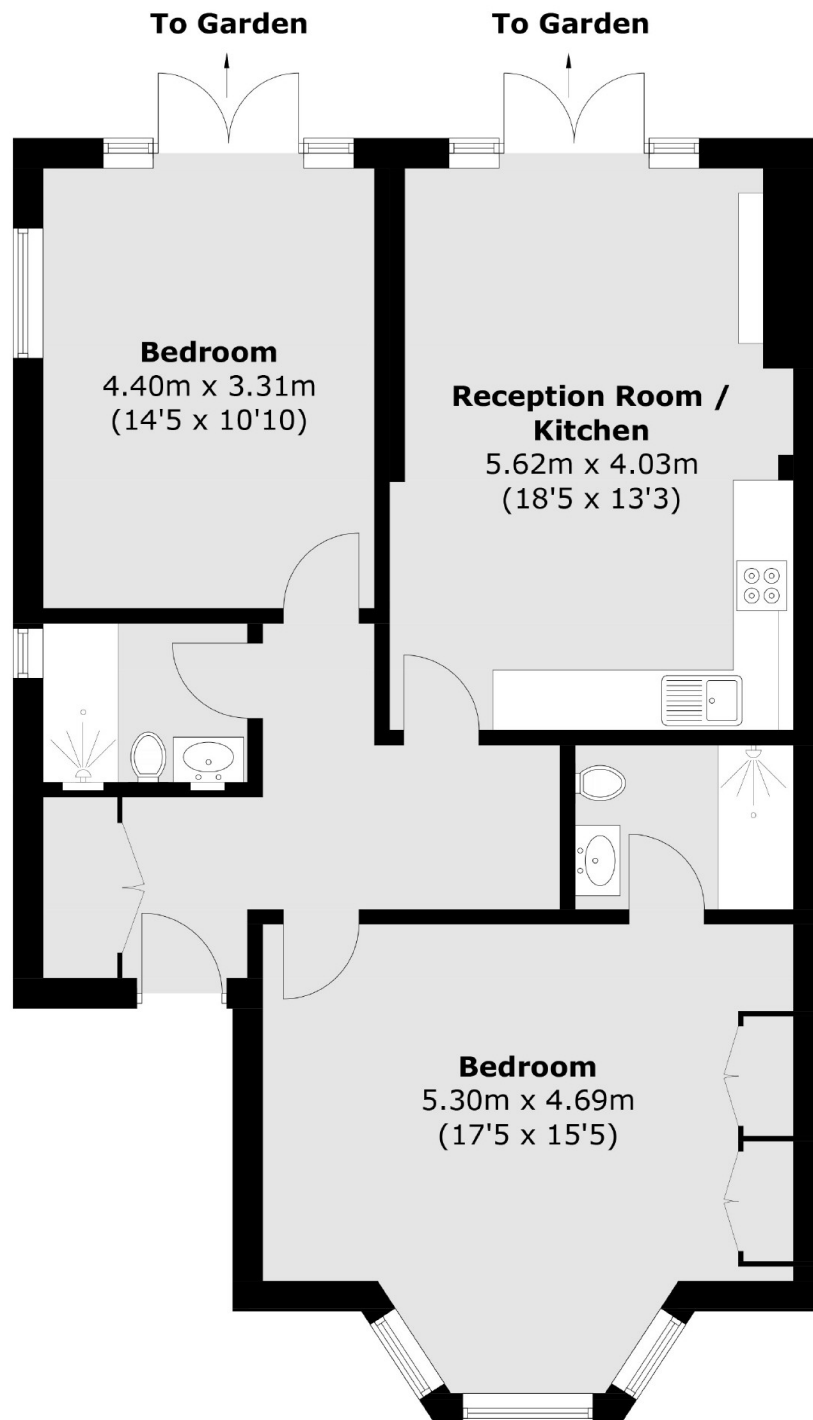
One of the finest examples of a two double bedroom, two bathroom ground floor garden flat, located in Wimbledon Park. The property is presented in excellent condition throughout and is offered to the market with no forward chain.

Located just around the corner from Leopold Parade with its boutique cafés, shops and bars. Both Wimbledon Park and Wimbledon Town Centre are nearby, with District line and overground services.

### Features

- Two Double Bedrooms
- Two Bathrooms
- Period Conversion
- Fully Refurbished
- Private Garden
- No Forward Chain

# Home Park Road, London, SW19



Total area (approx.): 79.8 sq. m (858.9 sq. ft)

## Dexters

Wimbledon  
12 The Broadway  
London  
SW19 1RF  
Sales  
020 8545 8580

Energy Rating: C. We aim to make our particulars both accurate and reliable. However they are not guaranteed; nor do they form part of an offer or contract. If you require clarification on any points then please contact us, especially if you're traveling some distance to view. Please note that appliances and heating systems have not been tested and therefore no warranties can be given as to their good working order.

 **RICS** | Regulated  
Estate Agent  
and Letting Agent

[dexters.co.uk](https://www.dexters.co.uk)