



Regent Place, SW19

£699,950

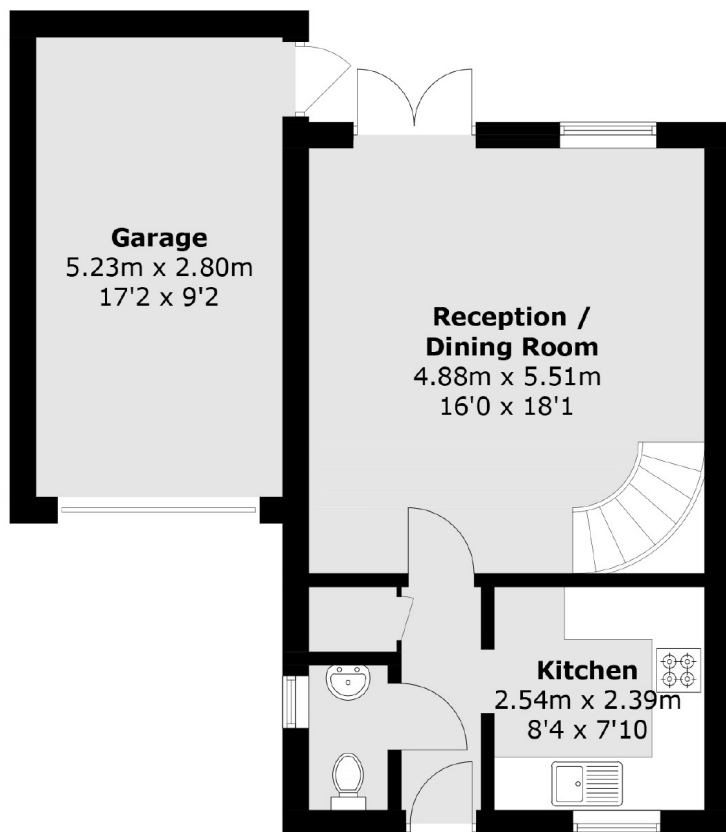
A link detached modern three bedroom, one bathroom freehold property with a separate W/C. The property has a garage, off-street parking and is being offered with no onward chain.

Regent Place is a private, no through road and is located close to Haydons Road (Thameslink), Wimbledon (mainline and district line) and two Northern line stations.

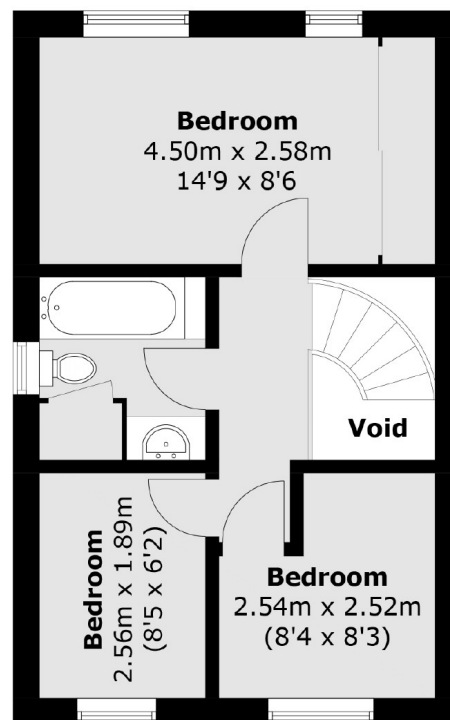
Features

- Link Detached
- Three Bedrooms
- Garage
- Off Street Parking
- Quiet Cul De Sac
- No Onward Chain

Regent Place, London, SW19



Ground Floor



First Floor

Approx Internal Area: 66.4 sq. m (714.7 sq. ft)
(Excluding Void)

Garage: 14.8 sq. m (159.3 sq. ft)

Total: 81.2 sq. m (874.0 sq. ft)