



Selhurst Close, SW19

£1,375 Per calendar month

A top floor, one double bedroom apartment with a large living/dining space, separate kitchen, four piece bathroom suite and allocated off street parking space.

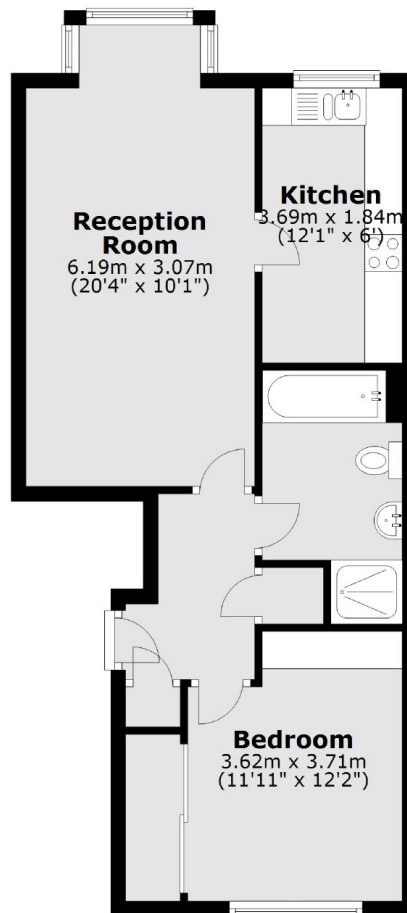
The property offers easy access to Southfields as well as Wimbledon Village. It is also perfectly situated for the green spaces of Wimbledon Common and Wimbledon Park.

Features

- One Bedroom
- Four Piece Bathroom Suite
- Top Floor
- Wandsworth Borough
- Off Street Parking
- Wimbledon Common

Selhurst Close, London, SW19

Second Floor



Total area: approx. 48.4 sq. metres (520.5 sq. feet)

Contact

To arrange a viewing call our office on the number below or visit our website.



Energy Rating: D. We aim to make our particulars both accurate and reliable. However they are not guaranteed; nor do they form part of an offer or contract. If you require clarification on any points then please contact us, especially if you're traveling some distance to view. Please note that appliances and heating systems have not been tested and therefore no warranties can be given as to their good working order.