



## Elm Grove, SW19

### £995,000

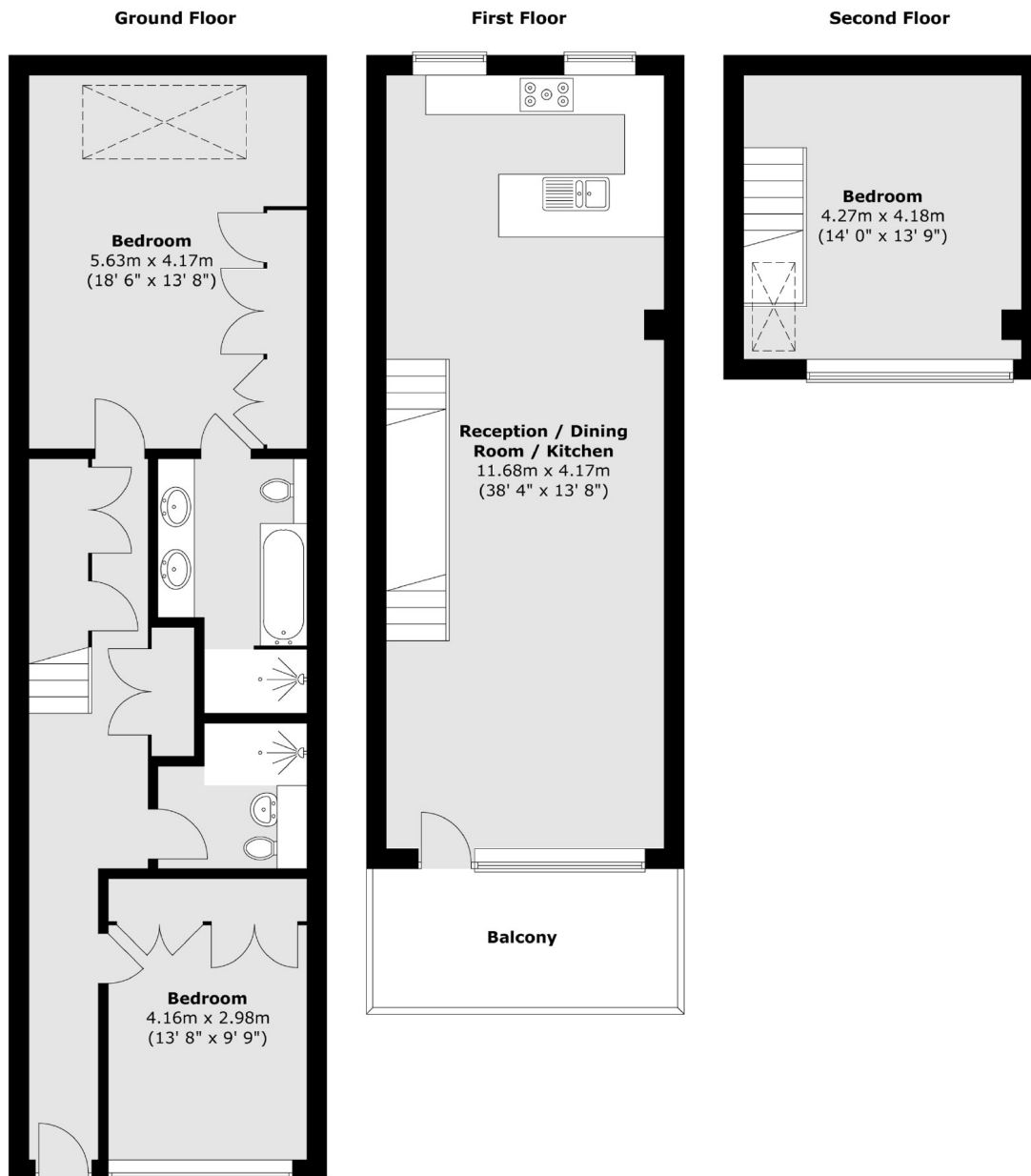
A three double bedroom, two bathroom house. The property is a new build property, with all the quirks and bohemian twists of a Central London home, complete with exposed brick walls, terrace and off street parking.

Elm Grove is a cul-de-sac situated just off of Worple Road and just under half a mile walk from Wimbledon Broadway allowing easy access to the town centre's restaurants and shops. Transport links include overground, underground and a number of good bus routes.

### Features

- Three Double Bedrooms
- Near 1500 Square Feet
- Off Street Parking
- Freehold House
- Private Roof Terrace
- No Onward Chain

# Elm Grove, London, SW19



Total area (approx.) : 136.4 sq. m (1468 sq. ft)  
Total balcony area (approx.) : 8.8 sq. m (95 sq. ft)

## Dexters

Wimbledon  
12 The Broadway  
London  
SW19 1RF  
Sales  
020 8545 8580

Energy Rating: C. We aim to make our particulars both accurate and reliable. However they are not guaranteed; nor do they form part of an offer or contract. If you require clarification on any points then please contact us, especially if you're traveling some distance to view. Please note that appliances and heating systems have not been tested and therefore no warranties can be given as to their good working order.

**RICS** Regulated  
Estate Agent  
and Letting Agent

dexters.co.uk