



West Barnes Lane, SW20

£1,900 Per calendar month

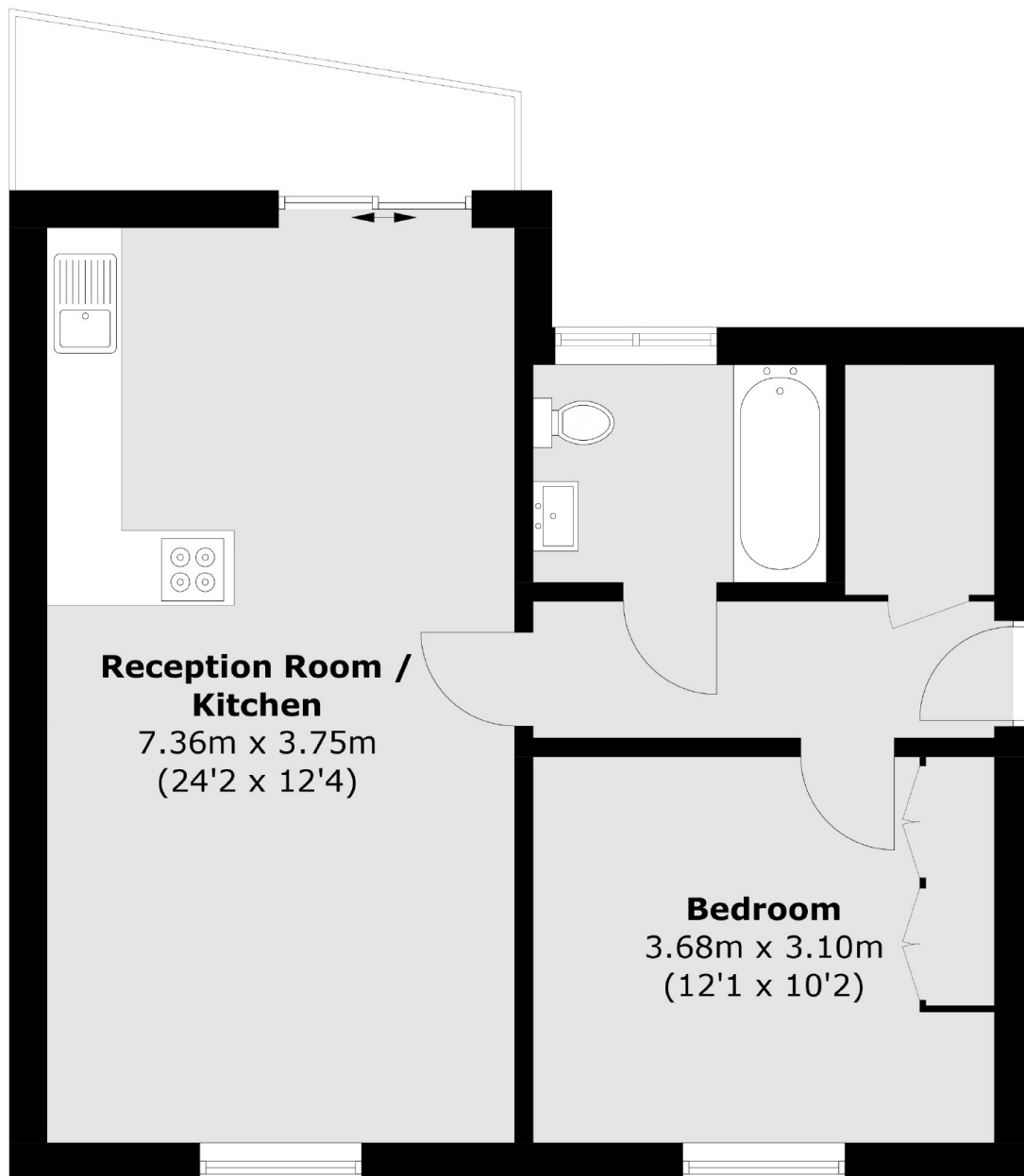
A one double bedroom, third floor, modern apartment with a large open plan living space and integrated kitchen. The property further benefits from a large storage cupboard and private balcony.

The property is exceptionally well located for Raynes Park Rail Station whilst allowing good access to the A3 and local bus services to Wimbledon, Kingston & Putney that are all very nearby.

Features

- One Bedroom
- One Bathroom
- Open Plan
- Balcony
- Lift
- Top Floor

West Barnes Lane, London, SW20



Third Floor

Total area (approx.): 52.0 sq. m (559.9 sq. ft)