



Poulter Park, SM4

£435,000

A two double bedroom, first floor apartment located within a nature park. Once the grand residence of a worldwide pharmaceutical mogul, now converted to a number of exclusive gated apartments with excellent views.

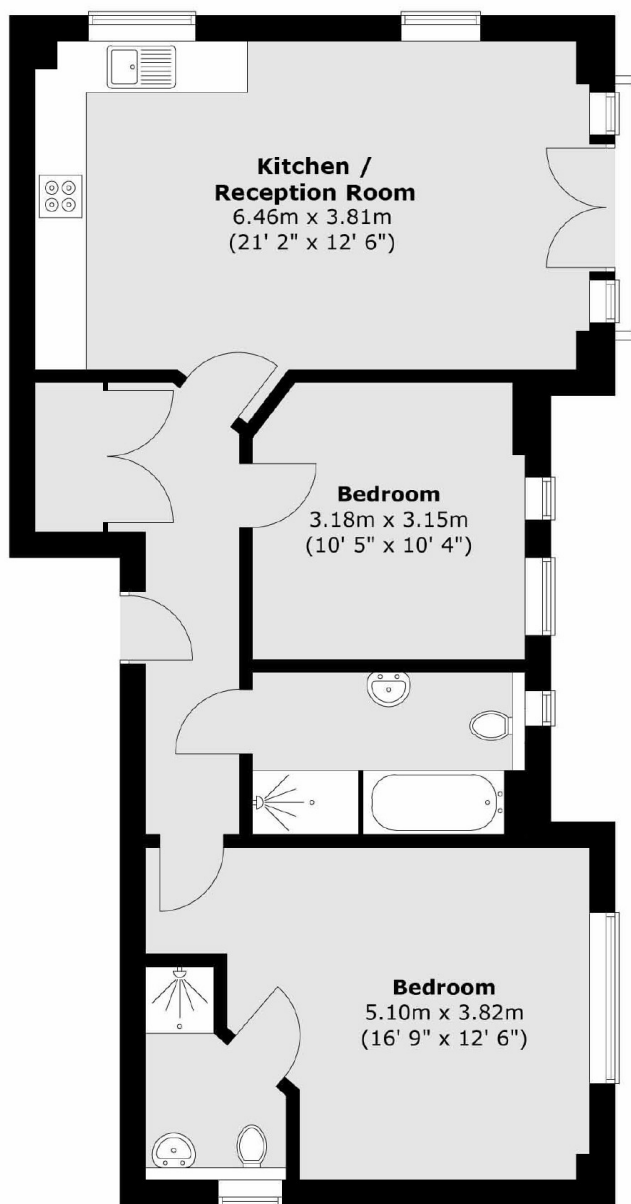
Located in the heart of Poulter Park, Bishopsford House occupies a large plot beside the River Wandle surrounded by the beauty of the Watermeads Nature Reserve and convenient bus routes at the base of the road.

Features

- Two Bedrooms
- Two Bathrooms
- Superb Views
- Within A Nature Park
- Allocated Parking
- Share Of Freehold

Poulter Park, Morden, SM4

First Floor



Total area (approx.) : 73.2 sq. m (788 sq. ft)
Total balcony area (approx.) : 0.6 sq. m (6 sq. ft)