



Wimbledon Park Side, SW19

£2,250 Per calendar month

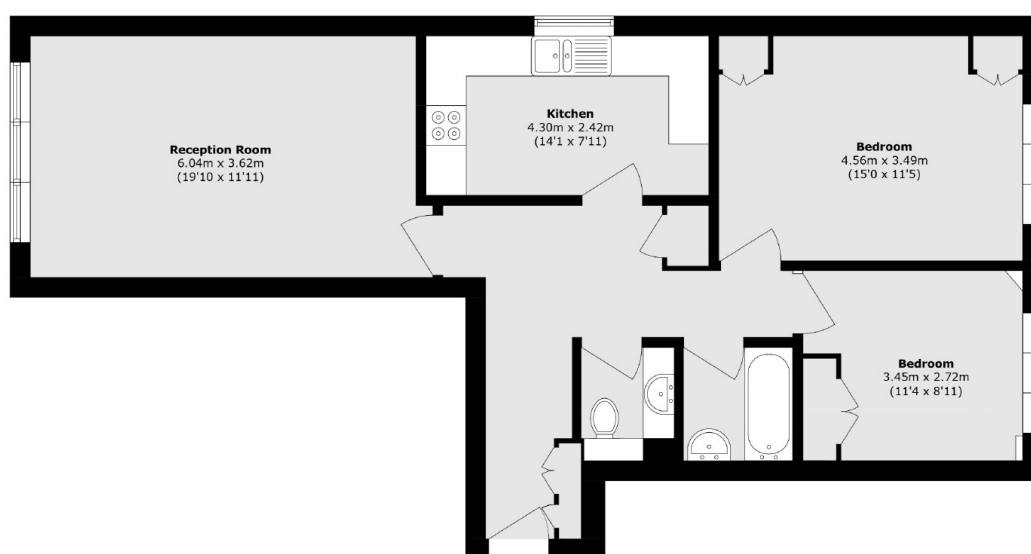
Large two bedroom flat to rent in a well maintained purpose built block in Southfields. The property is located on the ground floor, it has a separate kitchen, large living room and two generous bedrooms.

Spencer House is located directly opposite Wimbledon Common. There is a frequent bus service to both Putney & Wimbledon. The area has some highly sought after schools and some awesome restaurants and popular bars nearby.

Features

- Two Double Bedrooms
- Ground Floor
- Separate Kitchen
- Purpose Built Block
- Private Development
- Communal Gardens

Wimbledon Park Side, London, SW19



Total area (approx.): 77.8 sq. m (837.4 sq. ft)