

**Mostyn Road**  
Wimbledon, SW19

**Dexters**





## About the property

This remarkable four bedroom, two bathroom home is arguably one of the finest residences within the prestigious John Innes Conservation Area. Set on its own private grounds, the property has been extended and renovated to an exceptional standard.

The ground floor has been enhanced to create a stunning contemporary living area, while retaining its original period charm. You will find a cloakroom, WC and boot room leading into an expansive open plan kitchen and reception

room. There is a separate reception room, utility room, and an additional reception room that could serve as a further bedroom. The first floor has two double bedrooms and a family bathroom. The second floor features a further double bedroom with its own en suite bathroom.

Located on Mostyn Road, directly opposite the Merton Park Bowling Club, the property has excellent transport links and falls within the catchment area for Merton Park Primary School.

## Key features

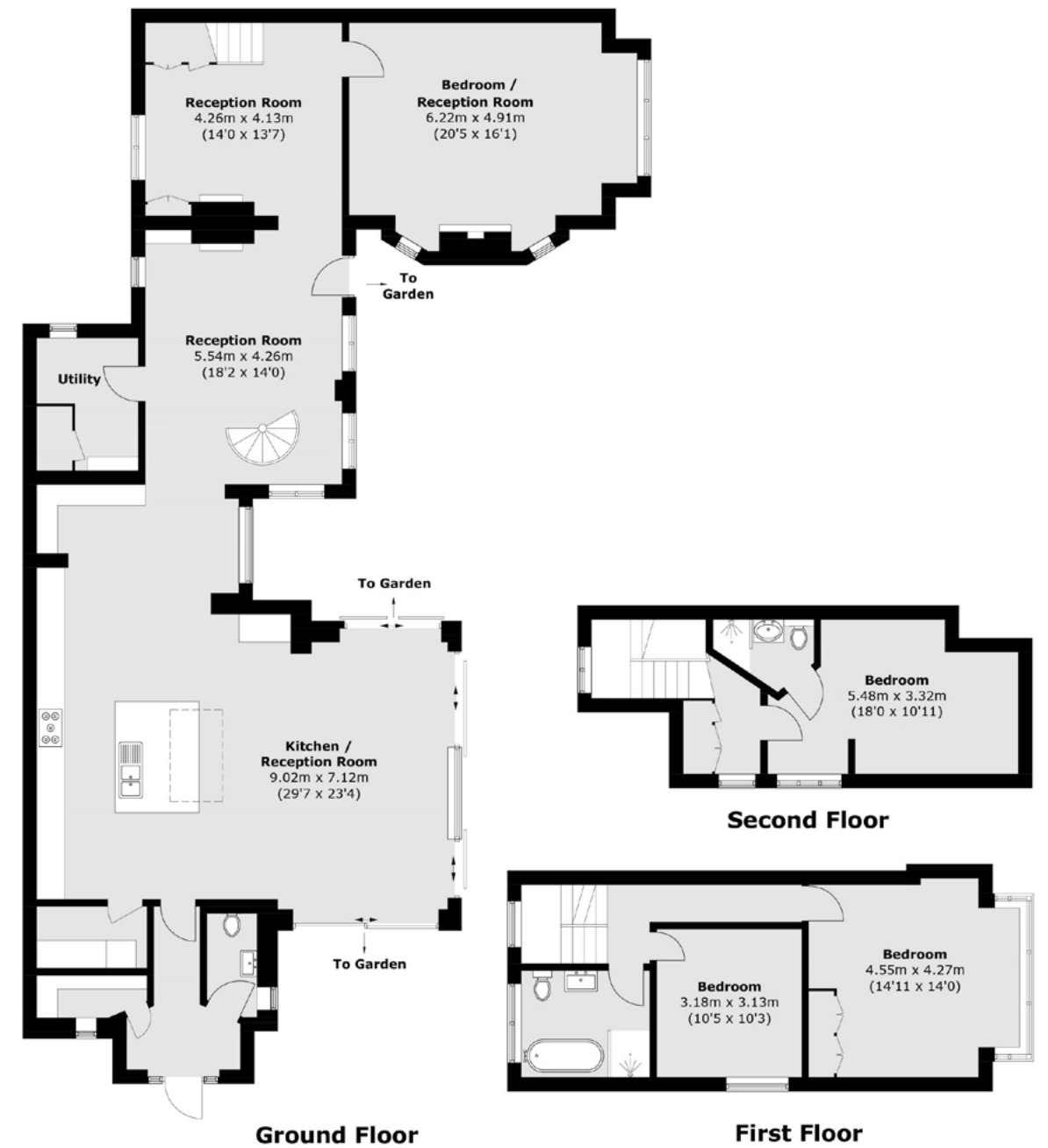
- Four Double Bedrooms
- Over 2,400 sq. ft
- Vaulted Ceilings
- Luxury Finish Throughout
- Excellent Transport Links
- Outstanding Primary Schools











TOTAL APPROX. FLOOR AREA 2,472.5 SQ. FT (229.7 SQ. M)

Energy Rating: D. We aim to make our particulars both accurate and reliable. However they are not guaranteed; nor do they form part of an offer or contract. If you require clarification on any points then please contact us, especially if you're traveling some distance to view. Please note that appliances and heating systems have not been tested and therefore no warranties can be given as to their good working order.





Dexters Wimbledon  
12 The Broadway,  
London, SW19 1RF  
020 8545 8580

# Dexters