



**Wilton Grove, SW19**

**£2,750,000**

**Dexters**





## Wilton Grove, SW19

An exceptionally rare opportunity to acquire this six bedroom semi detached Edwardian house, with off street parking and a large garden. The house is sold with no onward chain.

The ground floor has an expansive entrance hall, with three large reception rooms. The kitchen/ breakfast room is located to the rear of the property, with a conservatory. There's access to the garden, offered from both the conservatory and kitchen/ breakfast room.

The first floor is organised with four large double bedrooms, a family bathroom, with the largest of the bedrooms offering an ensuite bathroom. The second floor houses the two further double bedrooms, with the potential to redesign to become the master suite with a dressing room and bathroom.

The house has a huge amount of period features and charm, from the moment you stand in the driveway, to the top of the house and out in to the garden. The rarity of these houses coming to market and longevity they offer to buyers solidifies their desirability.

Located in the heart of Wimbledon Town Centre, opposite the recreation ground. Wimbledon Broadway is close by with swift London connections via tube, train and buses, alongside shops and eateries.

### Features

- Six Double Bedrooms
- Four Reception Rooms
- Semi Detached
- West Facing Garden
- Off Street Parking
- No Onward Chain





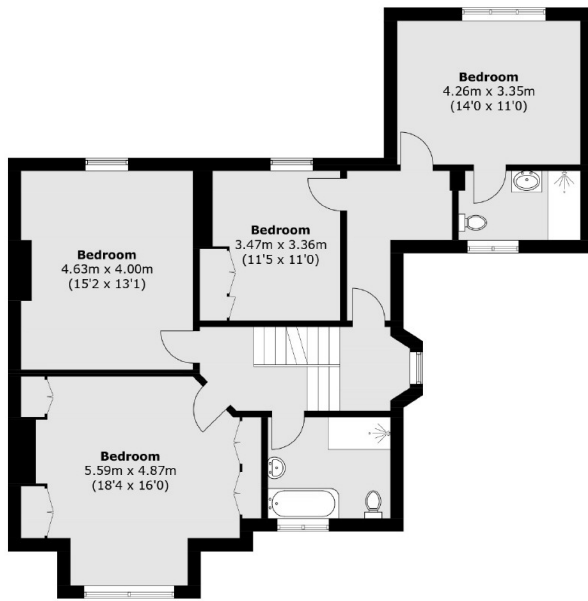








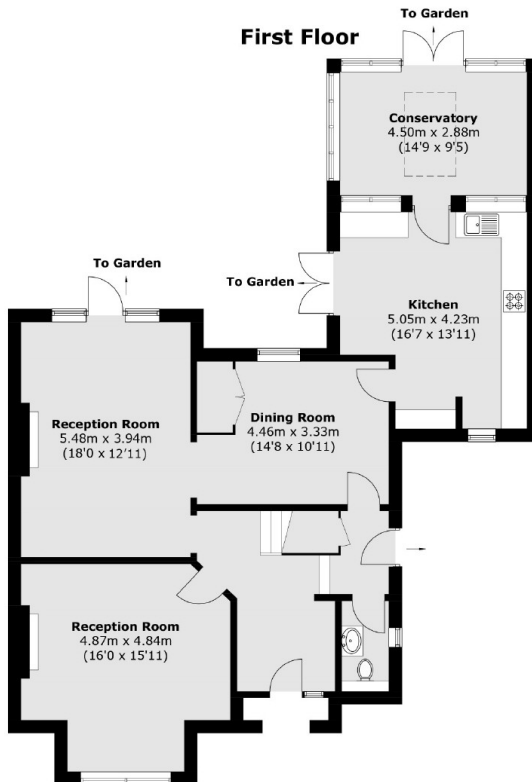
# Wilton Grove, London, SW19



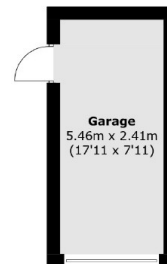
**First Floor**



**Second Floor**



**Ground Floor**



(Not Shown In Actual  
Location / Orientation)

Total area (approx.): 264.7 sq. m (2,849.2 sq. ft)  
Garage: 13.3 sq. m (143.2 sq. ft)

## Dexters

Wimbledon  
12 The Broadway  
London  
SW19 1RF  
Sales  
020 8545 8580

Energy Rating: . We aim to make our particulars both accurate and reliable. However they are not guaranteed; nor do they form part of an offer or contract. If you require clarification on any points then please contact us, especially if you're traveling some distance to view. Please note that appliances and heating systems have not been tested and therefore no warranties can be given as to their good working order.

**RICS** | Regulated  
Estate Agent  
and Letting Agent

dexters.co.uk