



Ashbourne Terrace, SW19

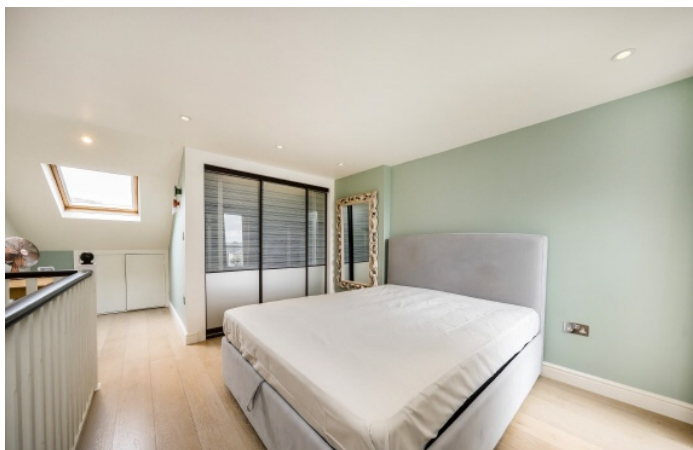
£995,000

A Rare Opportunity to Own a Beautiful Victorian Home in the Heart of Town. This exceptional Victorian house is presented in immaculate condition throughout and is offered chain-free. With three generously sized bedrooms, two modern bathrooms, a private south-facing garden, and off-street parking, this is a truly turnkey family home.

Situated on a quiet residential street just off The Broadway, the home enjoys a central Wimbledon location, equidistant from both the District and Northern lines, and the tram offering excellent transport connections across London, along with access to outstanding local schools.

Features

- Three Double Bedrooms
- Two Bathrooms
- South Facing Garden
- Off Street Parking
- Fully Refurbished
- No Forward Chain



Ashbourne Terrace, SW19

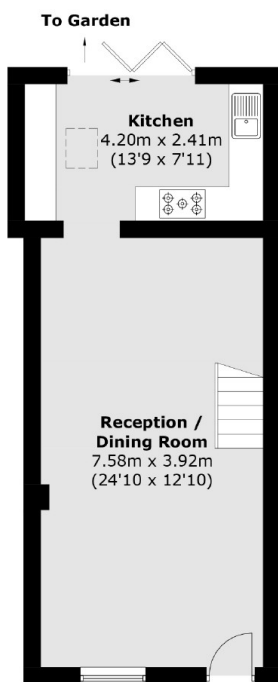
Inside, the ground floor boasts a spacious open-plan reception and dining area that flows into a contemporary, fully fitted kitchen. Bi-fold doors open onto a decked, south-facing private garden.

Upstairs, the first floor features two double bedrooms, one with built-in wardrobes offering plenty of storage, and a stylishly renovated family bathroom with premium-quality fittings and designer bathroom furniture. The loft has been converted into a bright and spacious principal suite, complete with a built-in wardrobe, access to a large under-roof storage space and a recently renovated en-suite bathroom featuring a large walk-in shower offering both luxury and practicality.

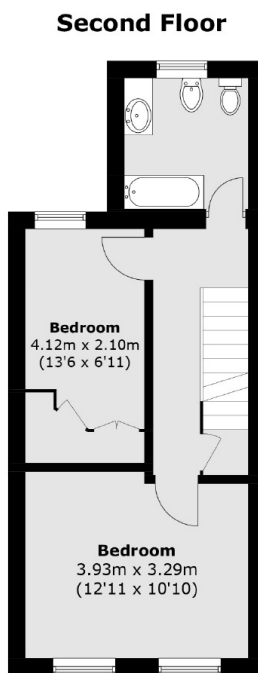
Lovingly refurbished to a high specification by the current owners, this charming home combines period character with contemporary design and premium furnishings.



Ashbourne Terrace, London, SW19



Ground Floor



First Floor

Total area (approx.): 106.6 sq. m (1,147.4 sq. ft)
(Excluding Eaves)