



Cochrane Road, SW19

£435,000

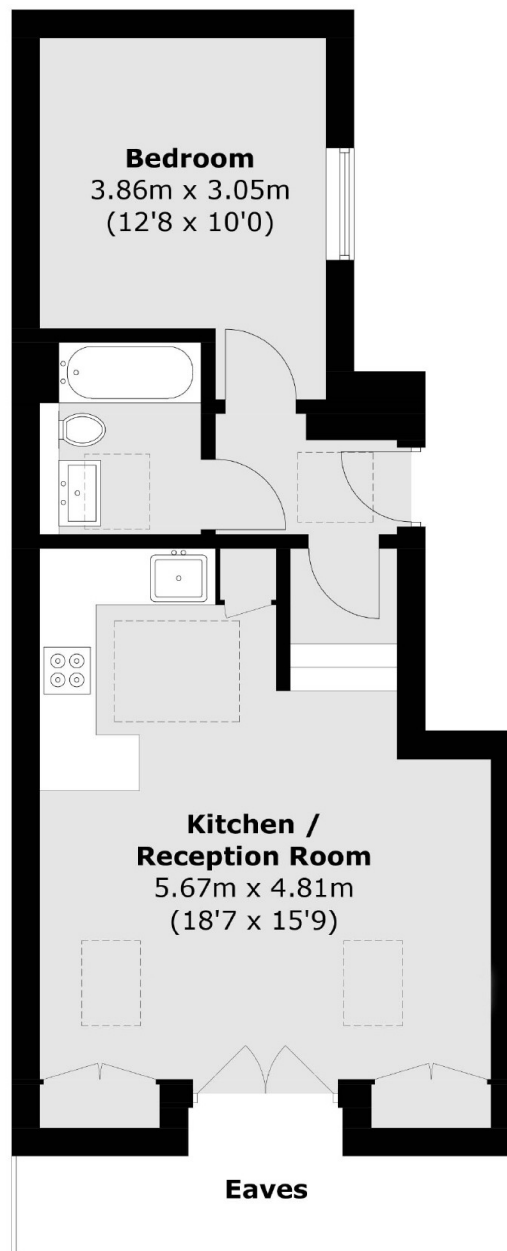
A one double bedroom first floor Victorian conversion apartment, with a luxury finish throughout. The entire property has been taken back to brick, extended and reconfigured to form three exceptional apartments.

Cochrane Road is next to Dundonald Park which has a newly developed sport facility and tennis courts. The area has a great selection of shops, restaurants and local amenities. Wimbledon Village, Common and Cannizaro Park are nearby.

Features

Back To Brick Renovation
First Floor
Victorian Conversion
Parking Permit Available
Near 480 Square Feet
Cul De Sac

Cochrane Road,
London, SW19



Total area (approx.): 44.4 sq. m (477.9 sq. ft)
(Excluding Eaves)

Dexters

Wimbledon
12 The Broadway
London
SW19 1RF
Sales
020 8545 8580

Energy Rating: . We aim to make our particulars both accurate and reliable. However they are not guaranteed; nor do they form part of an offer or contract. If you require clarification on any points then please contact us, especially if you're traveling some distance to view. Please note that appliances and heating systems have not been tested and therefore no warranties can be given as to their good working order.

 **RICS** | Regulated
Estate Agent
and Letting Agent

[dexters.co.uk](https://www.dexters.co.uk)