



Kings Road, SW19

£2,800 Per calendar month

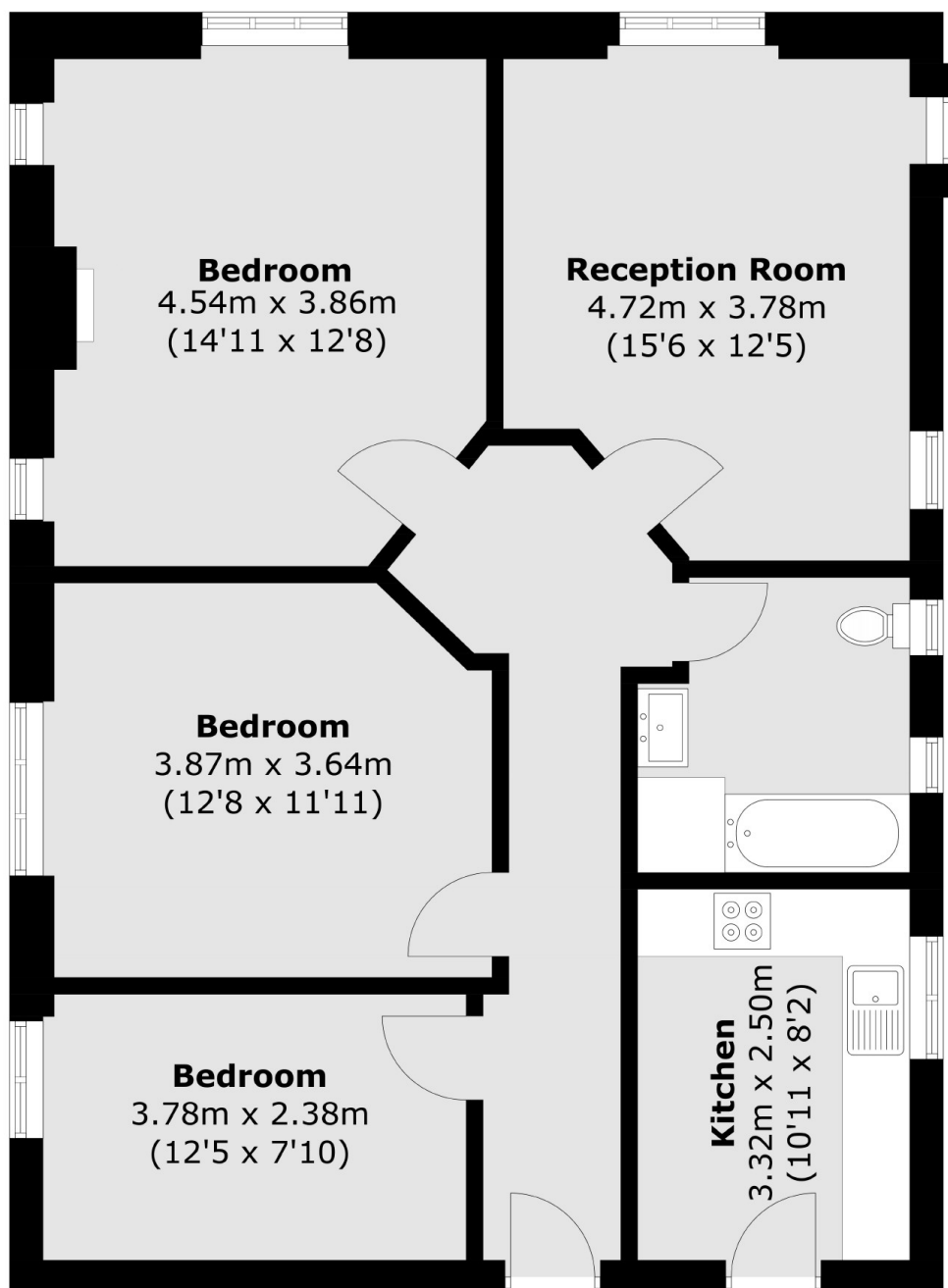
A three double bedroom, back to brick renovated, top floor, mansion flat, with a large reception room and separate kitchen located opposite the famous 'South Park Gardens'.

Kings Road is one of the most peaceful in Wimbledon with the apartment sitting at the heart of the South Park Gardens Conservation Area. There is immediate access to Wimbledon Town Centre, with the district line and overground.

Features

- Three Double Bedrooms
- Beautiful Communal Gardens
- South Park Gardens
- Central Location
- Top Floor
- Art Deco Mansion Flat

Kings Road, London, SW19



Total area (approx.): 84.5 sq. m (909.5 sq. ft)