



Northway, SM4

£525,000

A two double bedroom, two bathroom, split level apartment, complete with triple glazed aluminium windows and its own front door. The property is sold with a share of freehold, no onward chain and a private garden.

Northway is a fantastic residential street located close to a number of local stations with quick access into London. As well as green open spaces including Cannon Hill Common which is very nearby.

Features

- Two Double Bedrooms
- Split Level Apartment
- Own Front Door
- Allocated Parking Space
- Private Side Garden
- Share Of Freehold



Northway, SM4

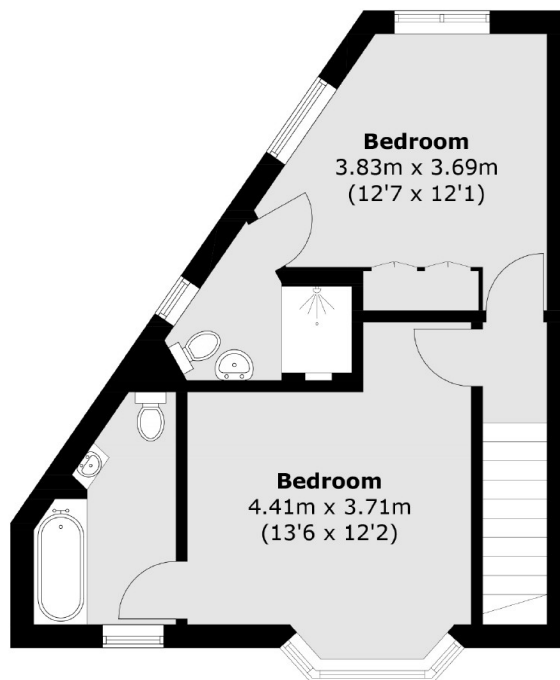
Access the ground floor with your own front door, leading in to the open plan kitchen, breakfast reception room. The kitchen has a state of the art kitchen with stone worktop and built-in custom fit bespoke cabinets and German kitchen appliances. There is underfloor heating throughout the ground floor and a w.c.

From the kitchen/ reception room there is direct access out on to a private, landscaped garden. Stairs take you to the first floor, where you'll find two large double bedrooms, both with ensuite luxury tiled and fitted bathrooms, with the smaller of the two housing bespoke built in wardrobes.

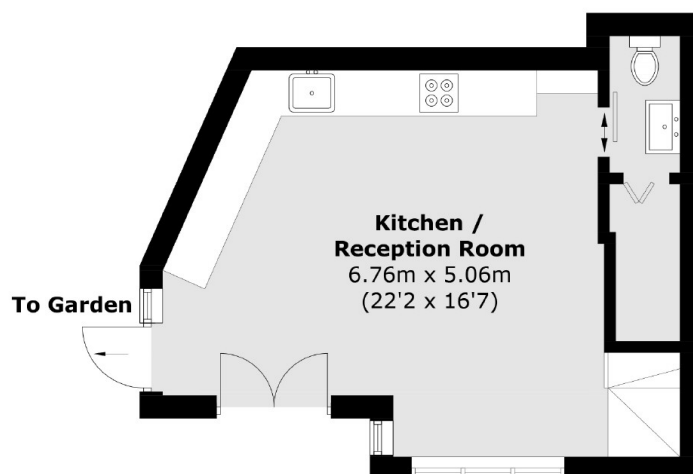
The apartment has an allocated parking space with an EV charging point, solar panels on the roof and a paved front garden area, cycle and bin storage. The apartment is sold with a share of freehold and no onward chain.



Northway, Morden, SM4



First Floor



Ground Floor

Total area (approx.): 69.2 sq. m (744.9 sq. ft)