



South Park Road, SW19

£1,250,000

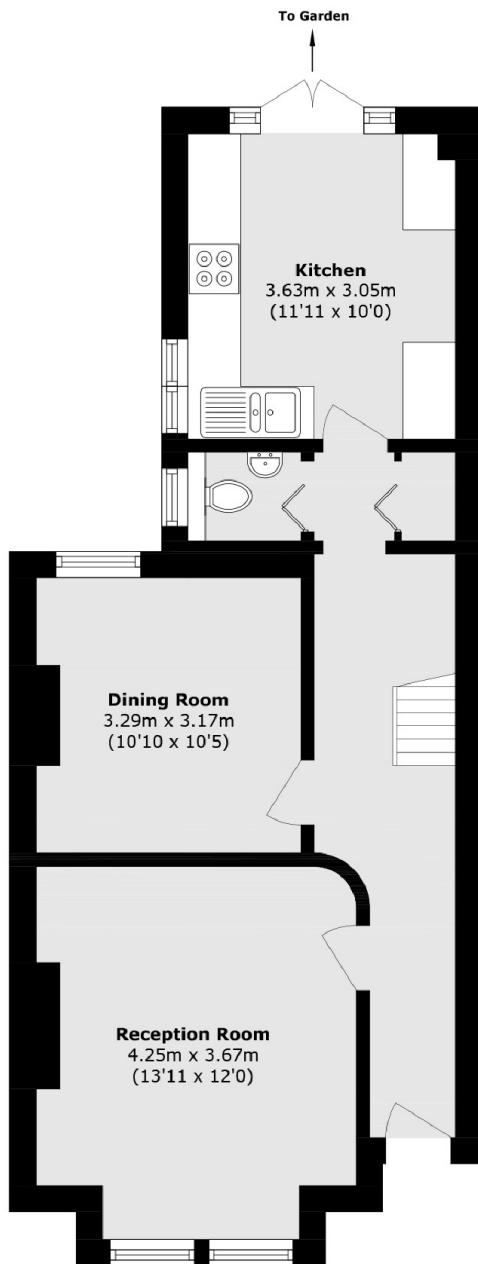
A rare opportunity to acquire a semi detached, four bedroom Victorian house, retaining the ability to renovate, vastly extend and retain a huge south facing garden, measuring in excess of a hundred feet.

South Park Road is a popular tree lined road within the South Park Gardens area. This area has highly sought after schools and a fantastic selection of High Street brand shops, popular restaurants and excellent transport links.

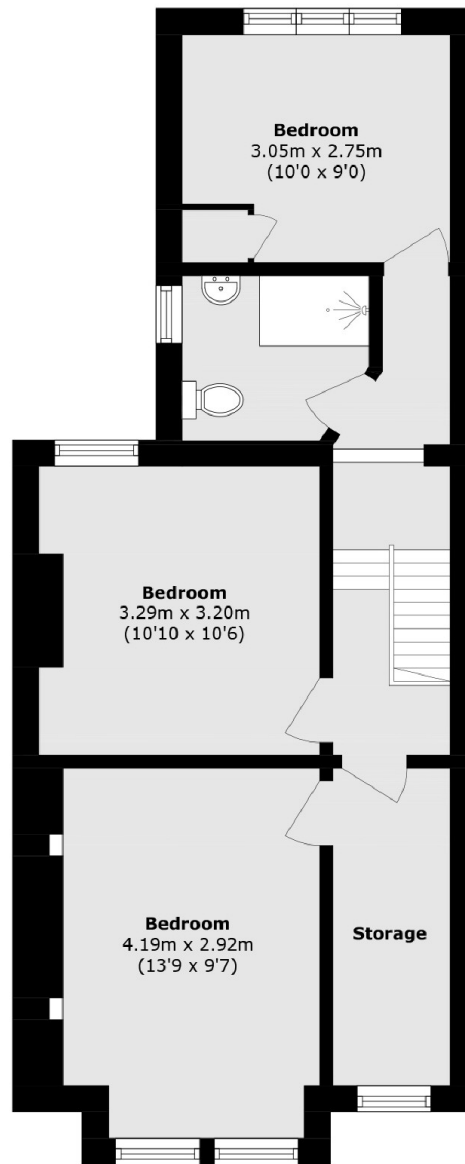
Features

- Four Bedrooms
- Garden Over 100 Feet
- Semi Detached House
- Full Renovation Required
- Vast Extension Potential
- South Facing Garden

South Park Road, London, SW19



Ground Floor



First Floor

Total area (approx.): 98.6 sq. m (1061.3 sq. ft)