



## Lambton Road, SW20

£2,475 Per calendar month

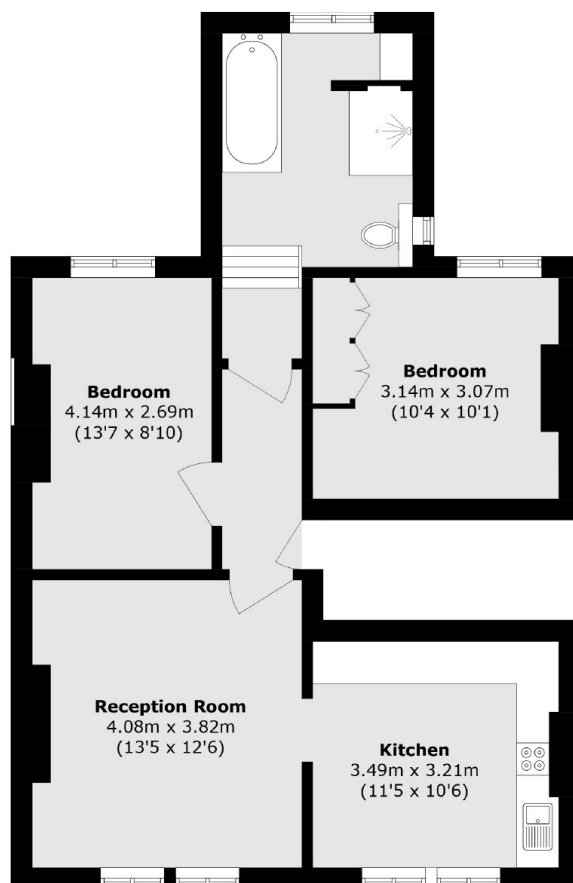
A two double bedroom first floor apartment within this period home. Both bedrooms are carpeted and double in size, there is a modern bathroom suite, large reception room and a lovely recess kitchen.

Lambton Road is perfectly located for access to Raynes Park rail station whilst allowing good access to Wimbledon town centre with its vast array of shops, restaurants and the mainline train station.

### Features

First Floor Property  
Two Double Bedrooms  
Modern Bathroom Suite  
Town Centre

# Lambton Road, London, SW20



Total area (approx.): 64.50 sq. m (694.3 sq. ft.)