



Wandle Bank, SW19

£595,000

This is a modern terrace home overlooking the River Wandle with two double bedrooms and a single, family bathroom on the first floor.

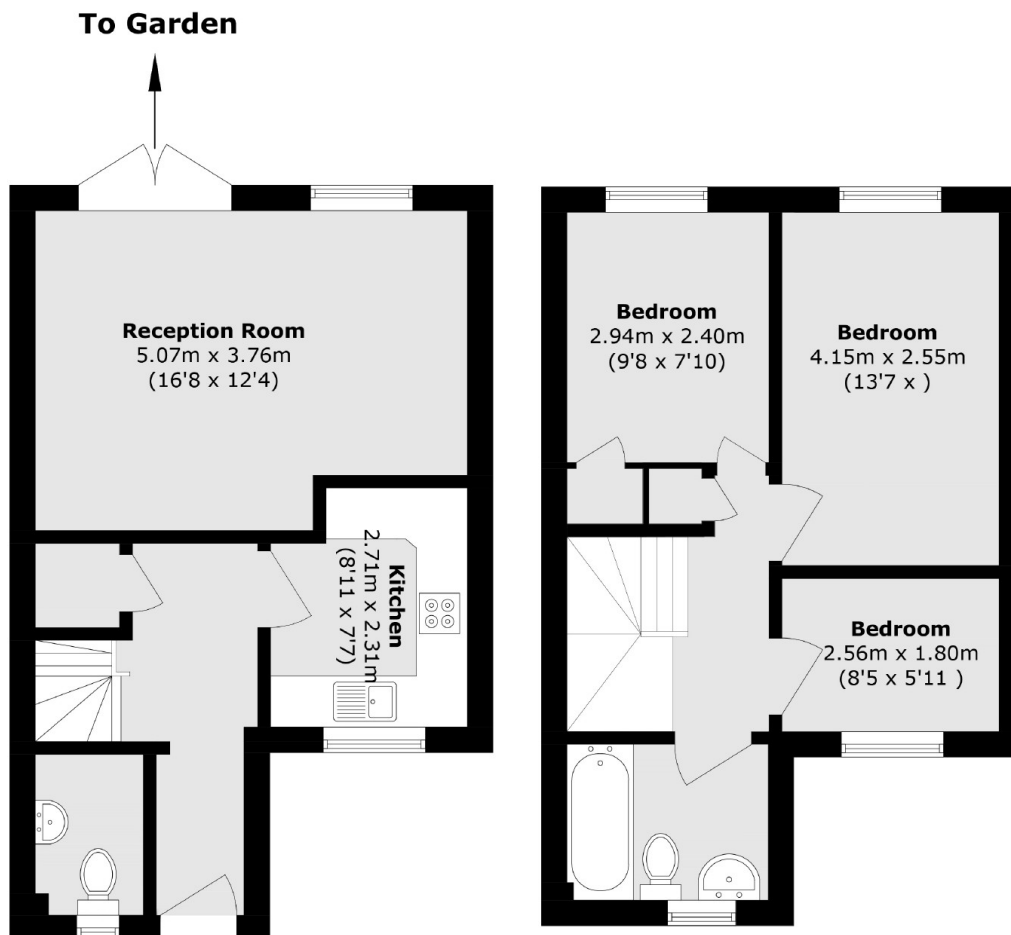
On the ground floor there's a guest W/C, a separate kitchen, a large reception room and a private walled garden. The property is being offered with no onward chain.

Located on a quiet street, within the catchment area of Singlegate Primary school, rated outstanding. Located opposite Wandle Park, with the high street and northern line tube just a short distance away,

Features

Three Bedroom Family Home
Modern House
One Bathroom
Guest WC
Private Garden
Off Street Parking

Wandle Bank, London, SW19



Total area (approx.): 70.8 sq. m (762.0 sq. ft)
(Excluding void)