



**Harcourt Road, SW19**

**£1,175,000**

**Dexters**



## Harcourt Road, SW19

A fantastic opportunity to purchase this stunning end of terrace four double bedroom Victorian residence, situated in the heart of the desirable 'Ministers', which has been fully refurbished by the current owners.

As you enter the ground floor you are greeted by an entrance hallway which provides access to an incredible reception/ kitchen/ dining room with bi-folding doors leading to the landscaped rear garden.

The first floor has two generous double bedrooms and a large four piece family bathroom overlooking the garden and stairs leading to the second floor landing. There are two further double bedrooms on the second floor, with the largest bedroom offering an en-suite shower room. The property has characterful, period features throughout.

Harcourt Road is a quiet road with restricted traffic flow near to Wimbledon Broadway. Perfectly located for young families, being in close proximity to the superb Pelham, St Mary's & Merton Park Primary Schools. Wimbledon Village is also nearby.

### Features

- Four Double Bedrooms
- Two Bathrooms
- End of Terrace
- Victorian Home
- Fully Refurbished
- 'Desirable Ministers' Area



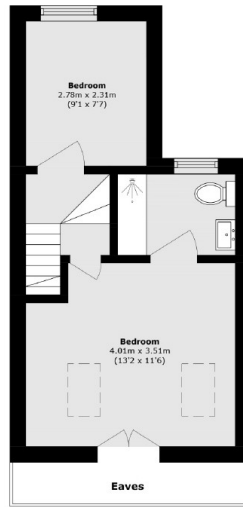








# Harcourt Road, London, SW19



**Second Floor**



**Ground Floor**

**First Floor**

Total area (approx.): 110.5 sq. m (1189.4 sq. ft)  
(Excluding Eaves)

## Dexters

Wimbledon  
12 The Broadway  
London  
SW19 1RF  
Sales  
020 8545 8580

Energy Rating: . We aim to make our particulars both accurate and reliable. However they are not guaranteed; nor do they form part of an offer or contract. If you require clarification on any points then please contact us, especially if you're traveling some distance to view. Please note that appliances and heating systems have not been tested and therefore no warranties can be given as to their good working order.

 **RICS** | Regulated  
Estate Agent  
and Letting Agent

[dexters.co.uk](https://www.dexters.co.uk)