



Kingston Road, SW20

£315,000

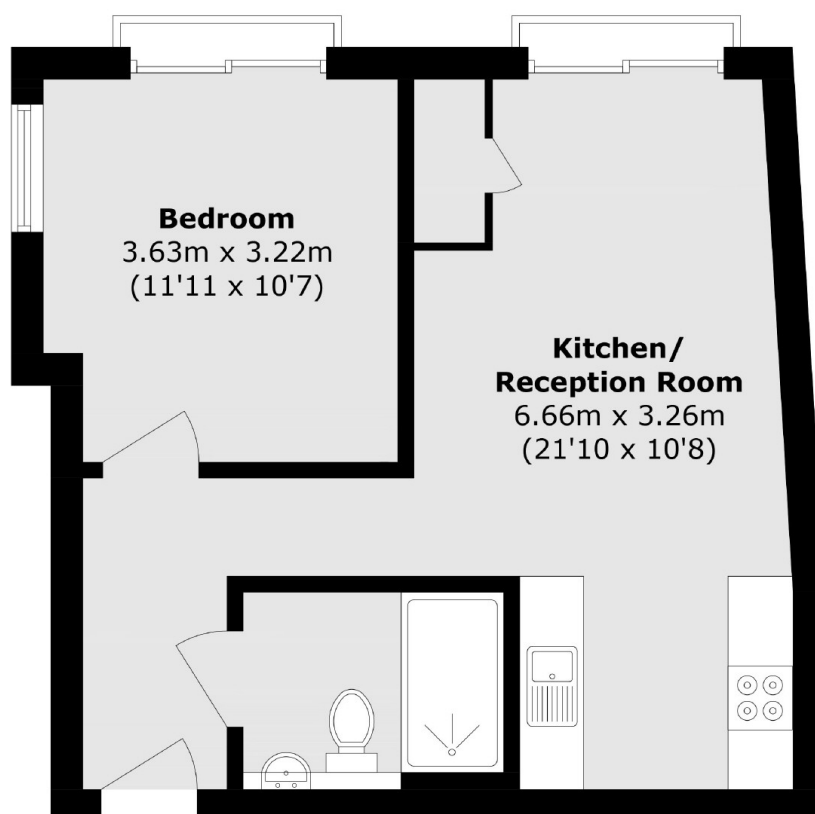
A modern, one double bedroom apartment, presented in superb condition. The views are far reaching, being located on the top floor, with a lift to all floors and no onward chain.

Kingston Road is in a popular location conveniently located for Wimbledon Town Centre. It is close to the very popular Wimbledon Chase Primary School as well as the green open space of Dundonald Park.

Features

- One Double Bedroom
- Top Floor Apartment
- Outstanding Views
- High Specification Finish
- Modern Development
- Lift To All Floors

Kingston Road, London, SW20



Total area (approx.): 44.5 sq. m (479.0 sq. ft)