

Hartfield Crescent, SW19

£3,000 Per calendar month

SHORT LET - A ground floor, two double bedroom apartment with a separate, modern kitchen and a spacious living room that offers direct access to the communal gardens.

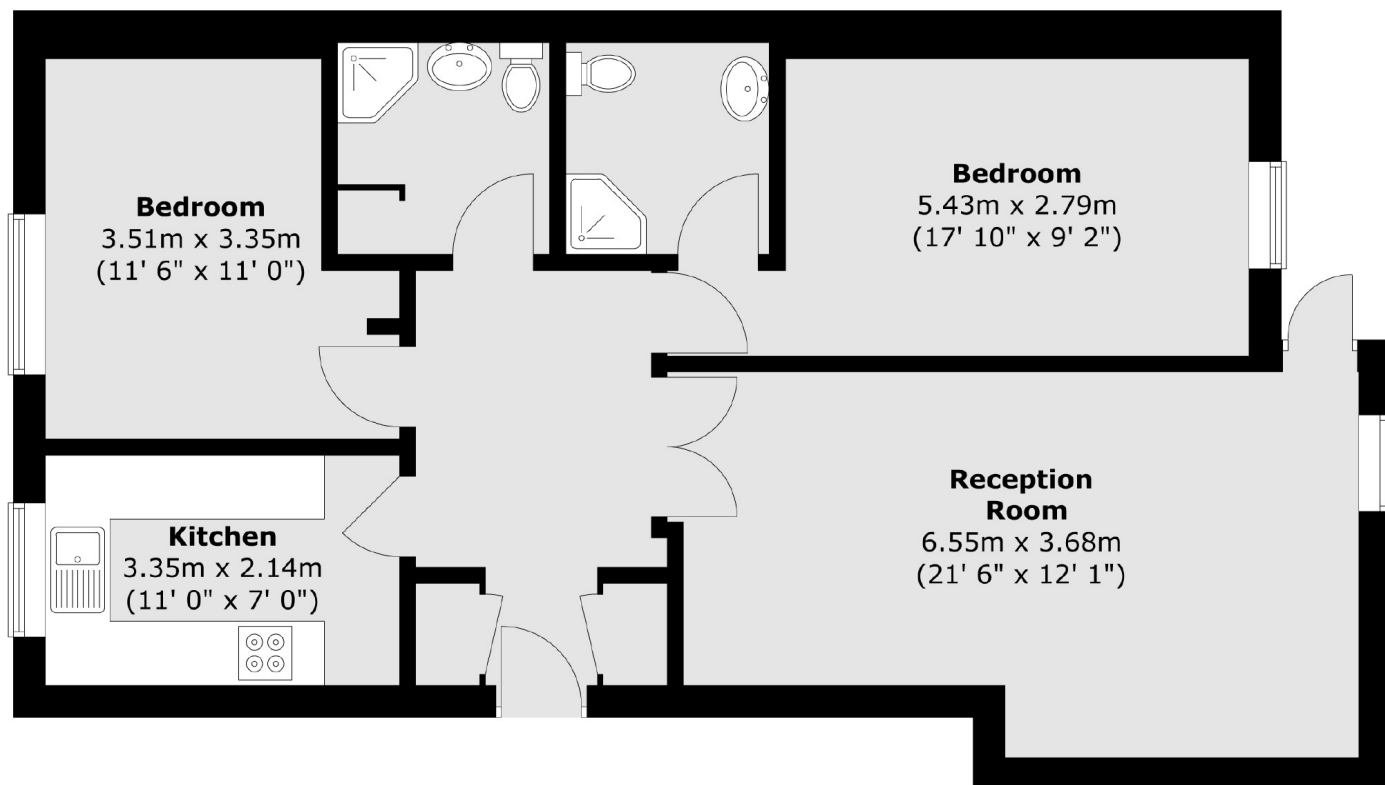
Extremely close to Wimbledon station, offering frequent South West and District Line services. Hartfield Crescent is a quiet residential road, tucked just off of Wimbledon town centre with its wide range of bars, shops and restaurants.

Features

- Two Bedroom
- Two Bathroom
- Ground Floor
- Parking
- Communal Gardens
- Gated Development

Hartfield Crescent, London, SW19

Ground Floor



Total area (approx.) : 74.1 sq. m (798 sq. ft)