



## Queens Road, SW19

### £995,000

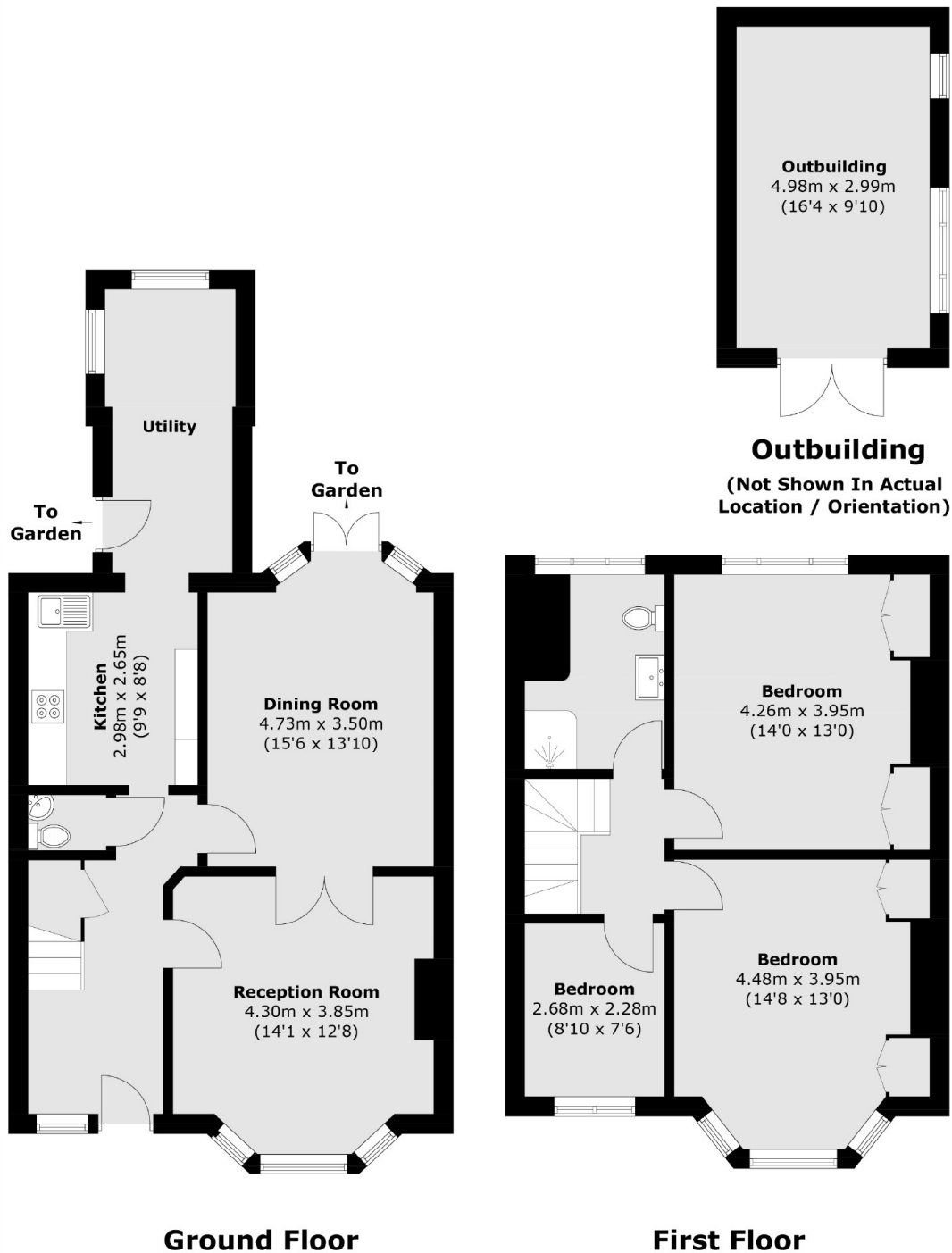
A four bedroom semi detached house. There is potential to extensively renovate and extend to the loft, rear and side, subject to permission. There's off street parking and a south facing garden stretching near 130 feet.

Queens Road is located minutes from the Town Centre, the new revamped Wimbledon Quarter shopping centre, the wonderful South Park Gardens & also Wimbledon Station, which offers easy access across London.

### Features

- South Facing Garden
- Four Bedrooms
- Vast Extension Potential
- Off Street Parking
- Garage And Store
- No Onward Chain

# Queens Road, London, SW19



Total area (approx.): 114.6 sq. m (1,233.5 sq. ft)  
Outbuilding: 15.1 sq. m (162.5 sq. ft)

## Dexters

Wimbledon  
12 The Broadway  
London  
SW19 1RF  
Sales  
020 8545 8580

Energy Rating: . We aim to make our particulars both accurate and reliable. However they are not guaranteed; nor do they form part of an offer or contract. If you require clarification on any points then please contact us, especially if you're traveling some distance to view. Please note that appliances and heating systems have not been tested and therefore no warranties can be given as to their good working order.

 **RICS** | Regulated  
Estate Agent  
and Letting Agent

dexters.co.uk