



Herbert Road, SW19

£5,250 Per calendar month

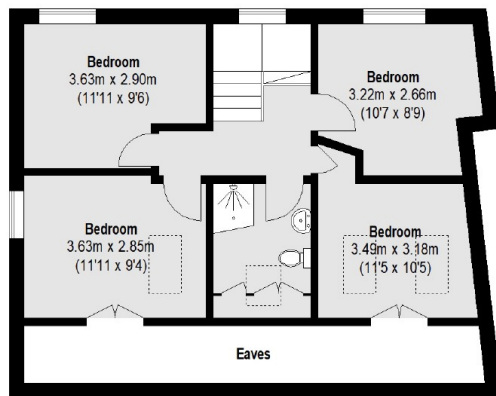
This eight bedroom double fronted Victorian house in the centre of Wimbledon has three reception rooms and a dining room on the ground floor as well as a West facing garden.

Herbert Road is a popular residential street located within Wimbledon Town Centre. You are just moments from Wimbledon Tube and Overground Station, and an eclectic range of restaurants bars and shopping facilities.

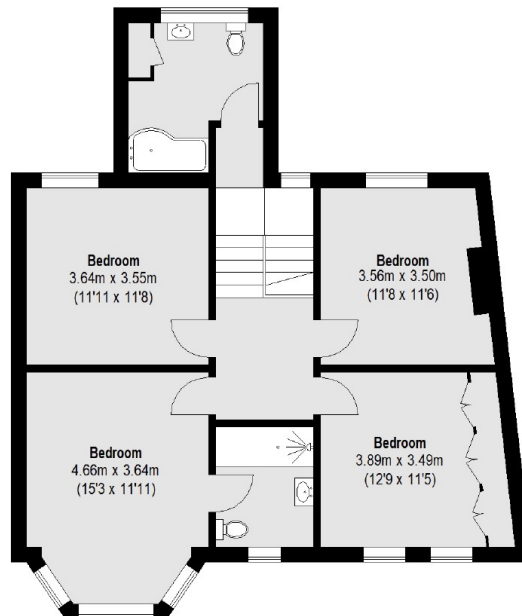
Features

- Double Fronted Victorian
- Eight Bedrooms
- Three Bathrooms
- West Facing Garden
- Two Garages
- Central Location

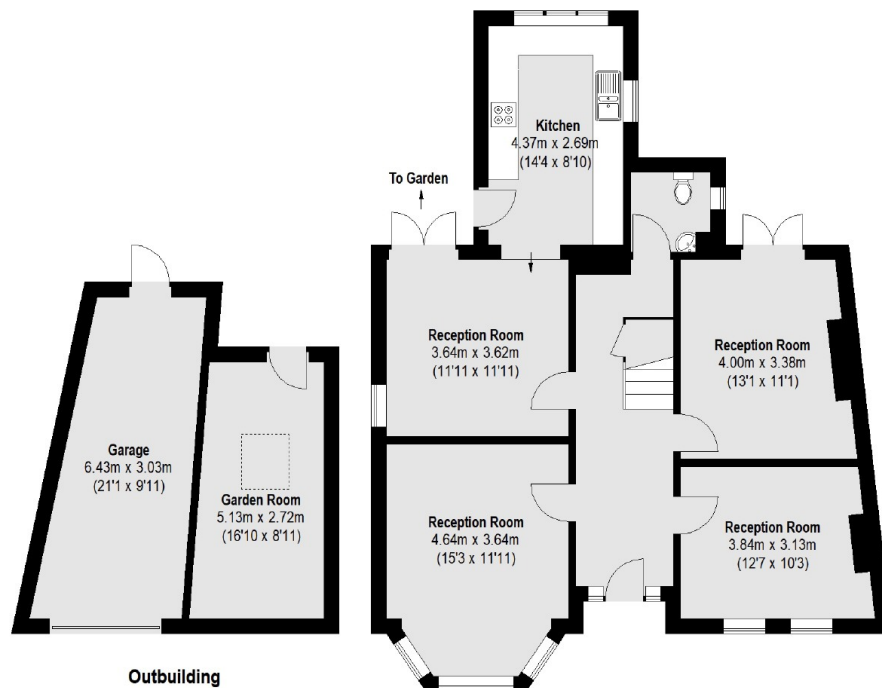
Herbert Road, London, SW19



Second Floor



First Floor



Outbuilding

(Not Shown In Actual
Location / Orientation)

Ground Floor

Total area (approx.): 217.89 sq. m (2345 sq. ft)
(Excluding Eaves)
Outbuilding: 31.26 sq. m (336 sq. ft)

Dexters

Wimbledon
12 The Broadway
London
SW19 1RF
Lettings
020 8545 8581

Energy Rating: C. We aim to make our particulars both accurate and reliable. However they are not guaranteed; nor do they form part of an offer or contract. If you require clarification on any points then please contact us, especially if you're traveling some distance to view. Please note that appliances and heating systems have not been tested and therefore no warranties can be given as to their good working order.

RICS Regulated
Estate Agent
and Letting Agent

dexters.co.uk