



Approach Road, SW20

£2,500 Per calendar month

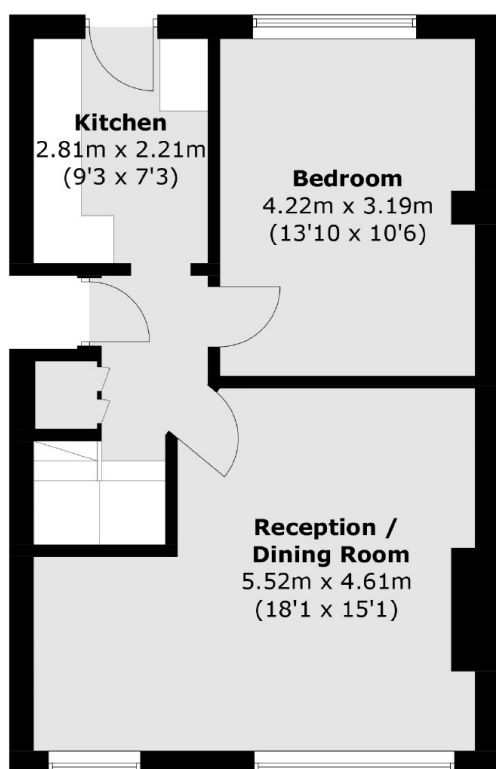
This recently refurbished four bedroom apartment, split over two floors is close by to Raynes Park station and has a spacious reception room, separate kitchen and modern bathroom.

Approach Road is perpendicular to the 'Apostles' roads, just a short walk from Raynes Park station, with its quick connections to London. A multitude of shops, restaurants, pubs and a Waitrose also just a short walk away.

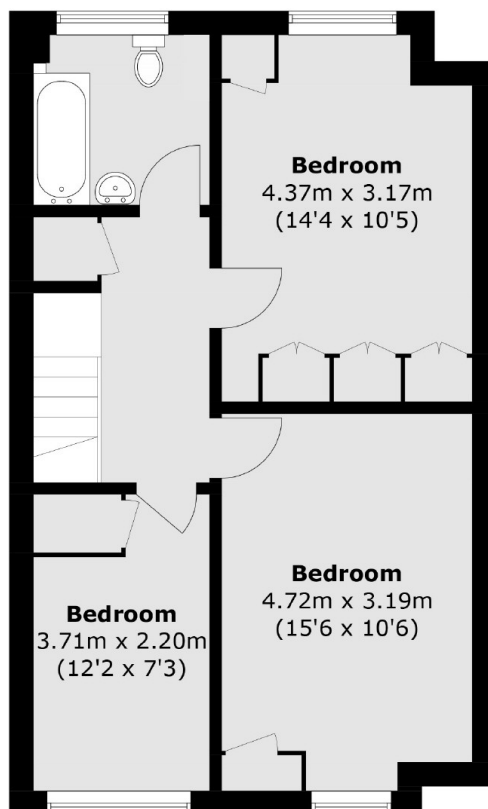
Features

- Four Bedrooms
- Refurbished
- Close To Station
- Perfect For Sharers
- Modern
- Triple Glazed

Approach Road, London, SW20



First Floor



Second Floor

Total area (approx.): 99.3 sq. m (1,068.8 sq. ft)