



## Cromwell Road, SW19

£2,250 Per calendar month

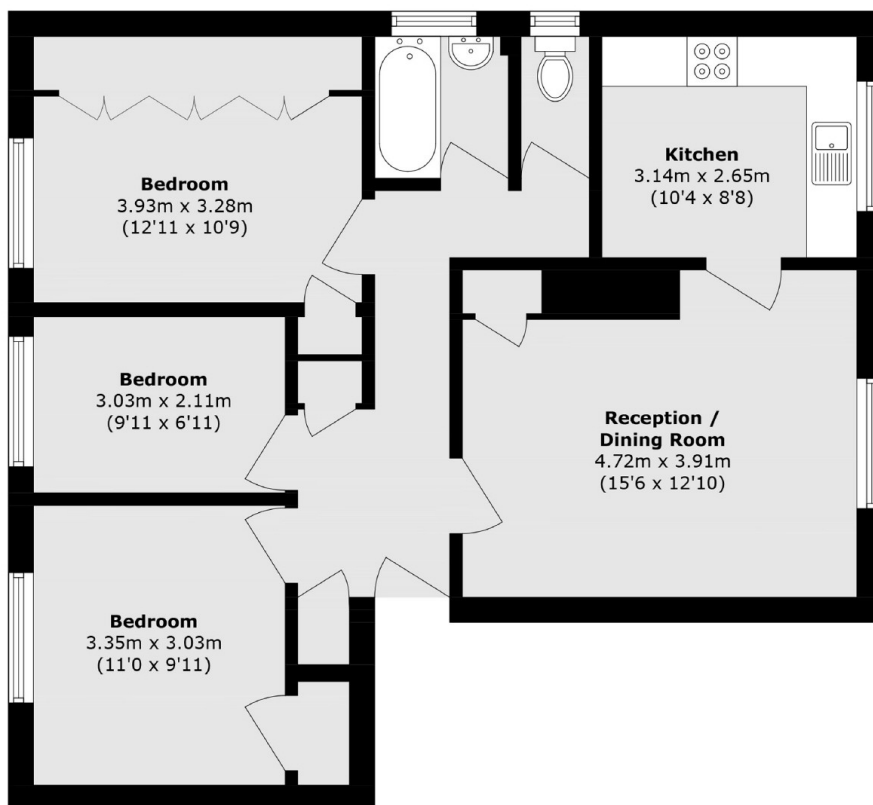
A spacious three bedroom flat located on the residential street of Cromwell Road, offers a separate kitchen, plenty of storage and an off street parking space.

Cromwell Road is a quiet street in a very convenient location. The area is highly sought-after due to the good schools and close proximity to green open spaces. Haydons Road Thames Link is 0.1 mile away and Wimbledon Park is 0.6 miles away.

### Features

- Three bedrooms
- Off-street parking
- Separate Kitchen
- First Floor
- Close to transport
- Good Schools

# Cromwell Road, London, SW19



Total area (approx): 174.5 sqm (1869.9 sq ft)