



**Quicks Road, SW19**  
**£1,150,000**

**Dexters**





## Quicks Road, SW19

A substantial bay front Victorian terraced family home, extended to the rear and loft to offer four bedrooms and two bathrooms with high ceilings and period features. The property has a generous private south facing garden.

The ground floor has a large through reception room to the front, complete with a characterful fireplace and plantation shutters. To the rear, there is under-stairs storage, followed by an open kitchen dining room with french doors leading to the rear garden.

The first floor has three double bedrooms and a family bathroom, with the loft then converted to further bedrooms, an en suite shower room and eaves storage.

Quicks Road is in the desirable 'Battles' area within Wimbledon. Near the northern line, superb schools, a selection of shops, bars, restaurants, theatres, parks and a cinema.

### Features

- Victorian Family Home
- Four Bedrooms
- Two Bathrooms
- South Facing Garden
- Battles Area





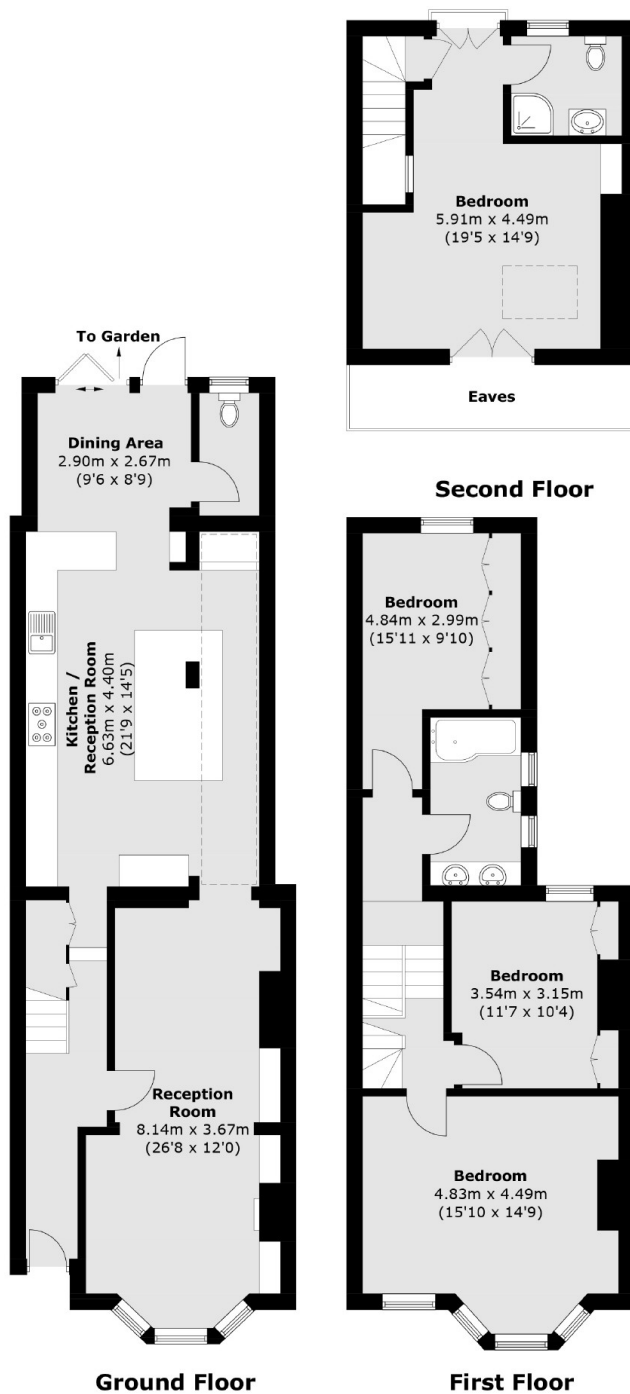








# Quicks Road, London, SW19



Total area (approx.): 164.3 sq. m (1,768.5 sq. ft)  
(Excluding Eaves)

## Dexters

Wimbledon  
12 The Broadway  
London  
SW19 1RF  
Sales  
020 8545 8580

Energy Rating: C. We aim to make our particulars both accurate and reliable. However they are not guaranteed; nor do they form part of an offer or contract. If you require clarification on any points then please contact us, especially if you're traveling some distance to view. Please note that appliances and heating systems have not been tested and therefore no warranties can be given as to their good working order.

**RICS** Regulated  
Estate Agent  
and Letting Agent

dexters.co.uk