



Palmerston Road, SW19

£795,000

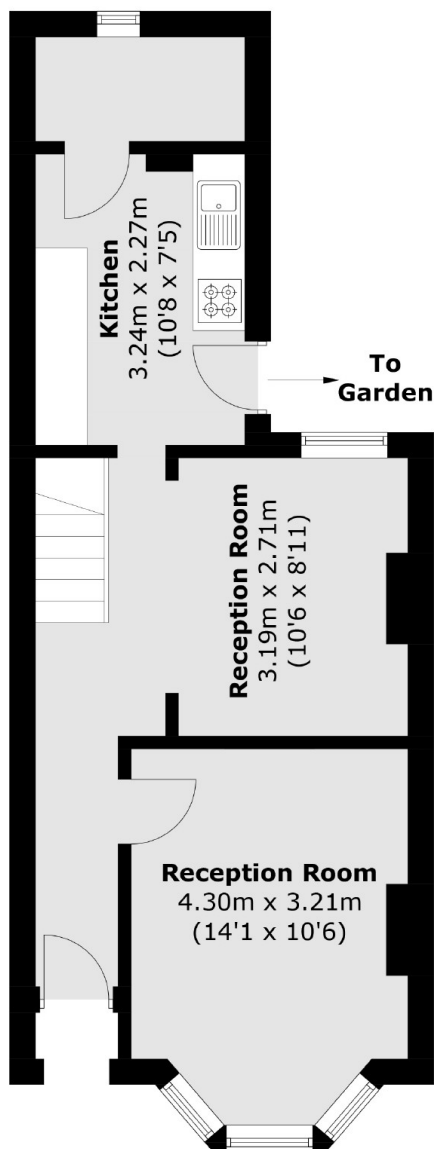
A two double bedroom Victorian, end of terrace house, offering a large south west facing garden. The house requires full renovation, and has the ability to be developed in to a four bedroom, two bathroom family home.

Located on a quiet street just off The Broadway, close to Wimbledon tube station, shops, bars and delicious restaurants. Wimbledon Theatre is just down the road, ideal for an evening performance or matinée

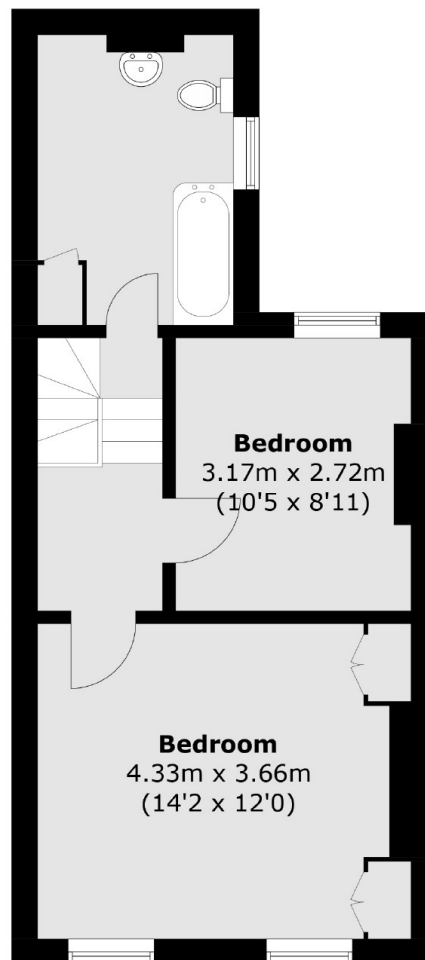
Features

Full Renovation Required
Victorian End Of Terrace
South West Facing Garden
Close To The Broadway
Four Bedroom Potential

Palmerston Road, London, SW19



Ground Floor



First Floor

Total area (approx.): 80.9 sq. m (870.7 sq. ft)

Dexters

Wimbledon
12 The Broadway
London
SW19 1RF
Sales
020 8545 8580

Energy Rating: . We aim to make our particulars both accurate and reliable. However they are not guaranteed; nor do they form part of an offer or contract. If you require clarification on any points then please contact us, especially if you're traveling some distance to view. Please note that appliances and heating systems have not been tested and therefore no warranties can be given as to their good working order.

 **RICS** | Regulated
Estate Agent
and Letting Agent

dexters.co.uk