



Haydons Road, SW19

£350,000

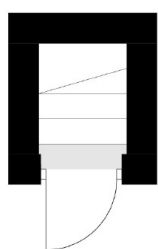
This is a first floor one double bedroom bay fronted period conversion with high ceilings and feature fireplaces. The property offers no onward chain, ideal for a first time buyer.

Haydons Road is located on the fringes of South Park Gardens, with easy access to Haydons Road ThamesLink, South Wimbledon northern line tube and Wimbledon Central shopping district.

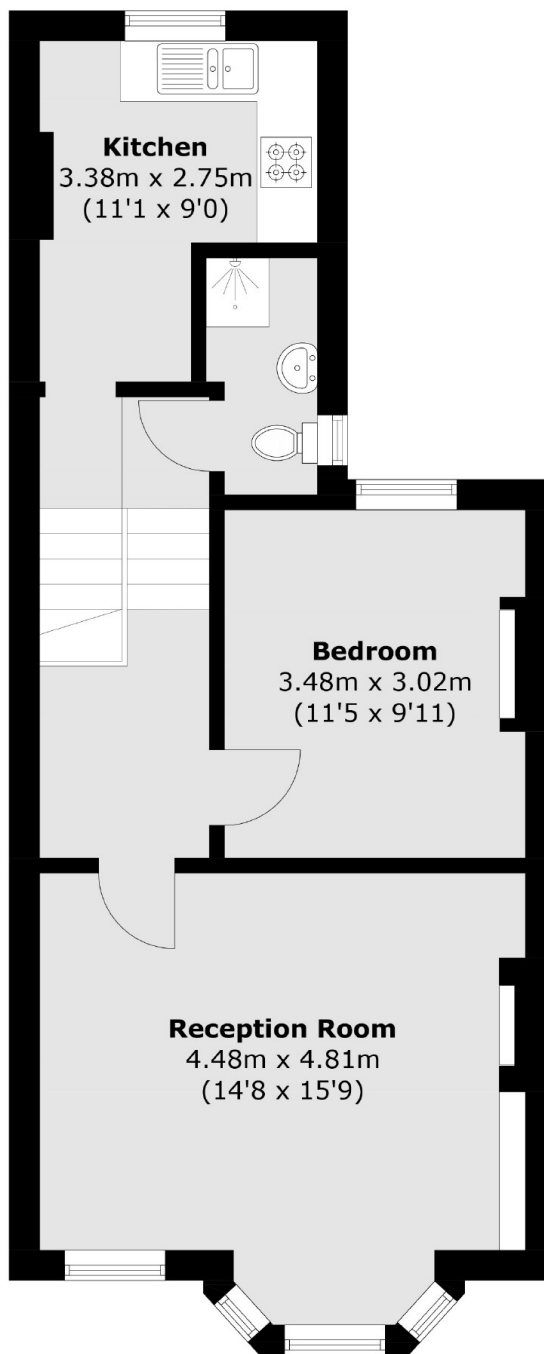
Features

- Period Conversion
- First Floor
- One Double Bedroom
- Healthy Lease
- No Onward Chain

Haydons Road, London, SW19



Ground Floor



First Floor

Total area (approx.): 50.4 sq. m (542.5 sq. ft)

Dexters

Wimbledon
12 The Broadway
London
SW19 1RF
Sales
020 8545 8580

Energy Rating: . We aim to make our particulars both accurate and reliable. However they are not guaranteed; nor do they form part of an offer or contract. If you require clarification on any points then please contact us, especially if you're traveling some distance to view. Please note that appliances and heating systems have not been tested and therefore no warranties can be given as to their good working order.

 **RICS** | Regulated
Estate Agent
and Letting Agent

[dexters.co.uk](https://www.dexters.co.uk)