



Meadowview Road, SW20

£565,000

This fantastic apartment is an attractive 2-bedroom home which benefits from two double bedrooms, an en suite with shower to bedroom 1, a modern open-plan kitchen, dining, and living area, and a contemporary family bathroom.

The Harrison has many great features, beginning in a welcoming hallway, the two double bedrooms can be found opposite the main entrance one of which has the advantage of an en-suite shower room. The shared bathroom can be found across the hall well equipped with Roca sanitaryware and stylish wall tiling.

The open-plan kitchen, living, and dining room provides shared space, extended outdoors onto a stunning private balcony. The kitchen is complete with fitted units and integrated appliances, and the room offers plenty of space for hosting guests.

Completion expected Q4 2025

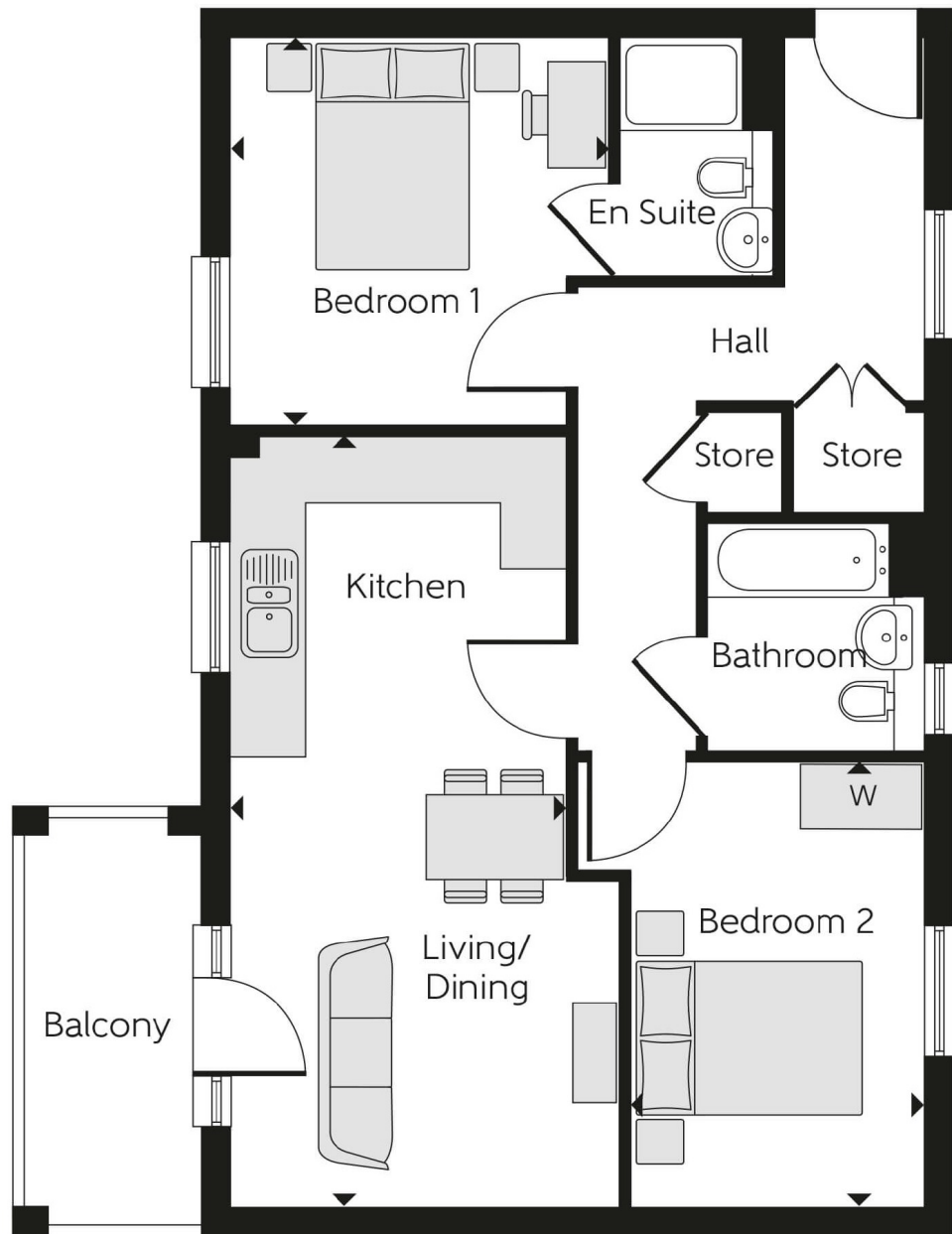
Cavendish Grove is a modern development of homes and apartments in Raynes Park, London. Offering a mix of 1- and 2-bedroom, plus 3- and 4-bedroom homes, this precisely planned community is sure to appeal to a range of potential homebuyers, including first-time buyers, families, young professionals, and London commuters.

Features

Electric Car Charging
Two Double Bedrooms
Two Bathrooms

Also near to Wimbledon
Long Lease
Allocated Parking

Meadowview Road,
Raynes Park, SW20



Dexters

Wimbledon
12 The Broadway
London
SW19 1RF
Sales
020 8545 8580

Energy Rating: . We aim to make our particulars both accurate and reliable. However they are not guaranteed; nor do they form part of an offer or contract. If you require clarification on any points then please contact us, especially if you're traveling some distance to view. Please note that appliances and heating systems have not been tested and therefore no warranties can be given as to their good working order.

 **RICS** | Regulated
Estate Agent
and Letting Agent

dexters.co.uk