



Elm Grove, SW19

£3,600 Per calendar month

A modern three bedroom, two bathroom townhouse with open plan living/dining room and kitchen on the first floor, making it a great space to entertain. With the high finish, there is little to do except unpack and enjoy!

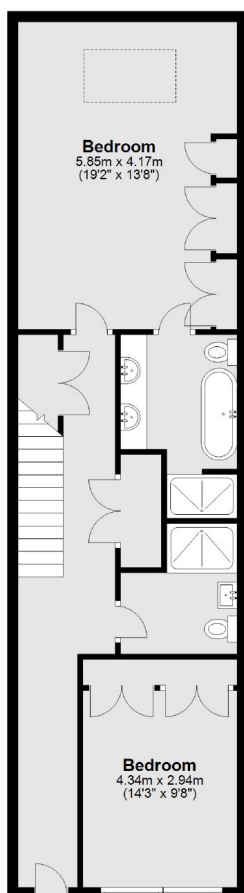
Elm Grove is cul-de-sac just over half a mile from Wimbledon Broadway and station allowing easy access to the town centre's restaurants and shops.

Features

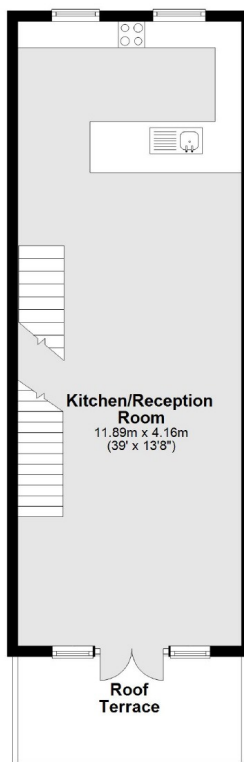
- Three Bedroom House
- Two Bathrooms
- Mezzanine Level
- Off-street Parking
- Cul-de-sac
- Terrace

Elm Grove, London, SW19

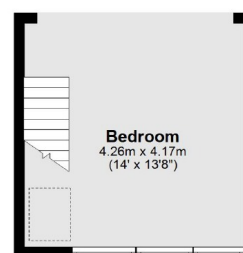
Ground Floor



First Floor



Second Floor



Main area: Approx. 135.9 sq. metres (1462.8 sq. feet)
Plus roof terrace, approx. 9.0 sq. metres (96.6 sq. feet)