



Aylward Road, SW20

£1,025,000

A 1930's house that has been extended into the loft and is presented in excellent condition throughout! With four bedrooms, two bathrooms and beautiful views over playing fields

Aylward Road is a quiet residential street, equidistant to both Wimbledon Chase and South Merton train stations. In the priority catchment areas for both Rutlish school and Wimbledon Chase Primary school, the famous National Trust Morden Hall Park, Cannon Hill Common, and Wimbledon town centre just a short distance away.

Features

- Four Bedrooms
- Two Bathrooms
- Semi Detached
- Views Over Playing Fields
- Off Street Parking
- Potential for Further Expansion



Aylward Road, SW20

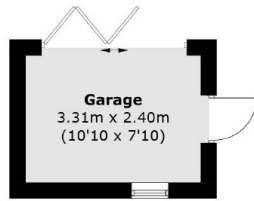
There's a separate reception room to the front, complete with plantation shutters. The rear of the house has the perfect open kitchen/dining room, and french doors leading to the rear garden. The house further benefits from four working gas fireplaces

The first floor has three bedrooms, two of which are very generous doubles with built in wardrobes and there is a single bedroom to the front and a luxurious family bathroom to the rear. The loft has been converted to create a generous master bedroom, separate bathroom and a study.

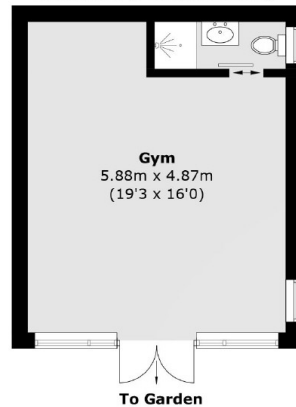
The rear garden offers a decked seating area, perfect for entertaining, in addition to a sizeable lawn and large multipurpose studio complete with running water, shower room and electricity.



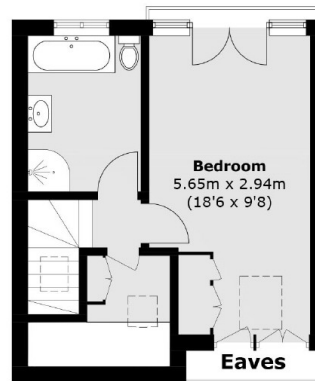
Aylward Road, London, SW20



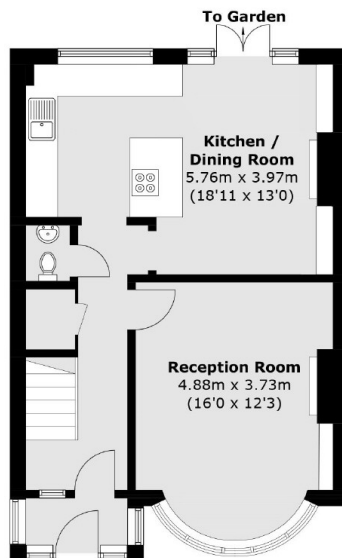
(Not Shown In Actual
Location / Orientation)



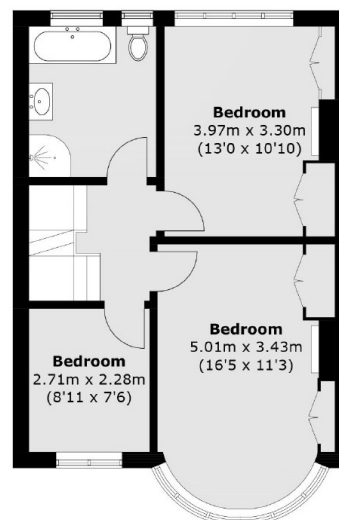
(Not Shown In Actual
Location / Orientation)



Second Floor



Ground Floor



First Floor

Total area (approx.): 132.0 sq. m (1,420.8 sq. ft)
Outbuildings: 37.4 sq. m (402.6 sq. ft)
(Excluding Eaves)