



## Worple Road, SW19

£3,000 Per calendar month

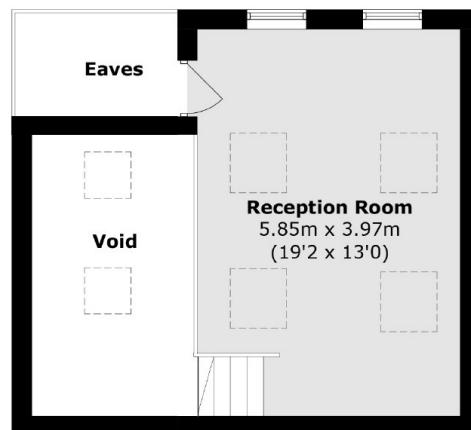
This split level three bedroom, three bathroom property offers two living areas, one open plan with the kitchen on the ground floor and the other on the mezzanine.

Located just a short distance from central Wimbledon with the district line tube, overground train and tram line, as well as exclusive shops, restaurants, pubs and bars.

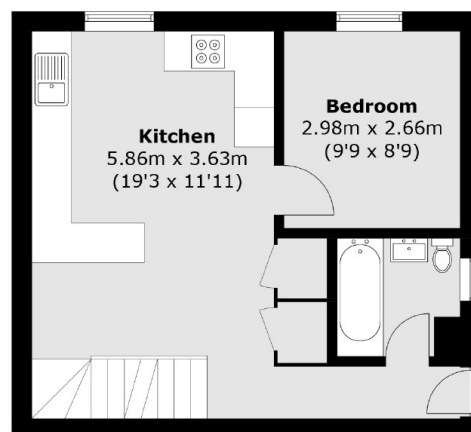
### Features

- Three Bedrooms
- Three Bathrooms
- Split Level
- Mezzanine
- Garden
- Open Plan

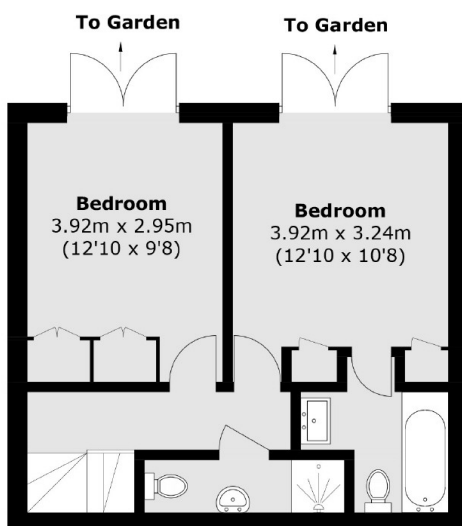
# Worple Road, London, SW19



**First Floor**



**Ground Floor**



**Lower Ground Floor**

Total area (approx.): 99.3 sq. m (1068.8 sq. ft)  
(Excluding Eaves / Void)