



Wimbledon Park Side, SW19

£4,395 Per calendar month

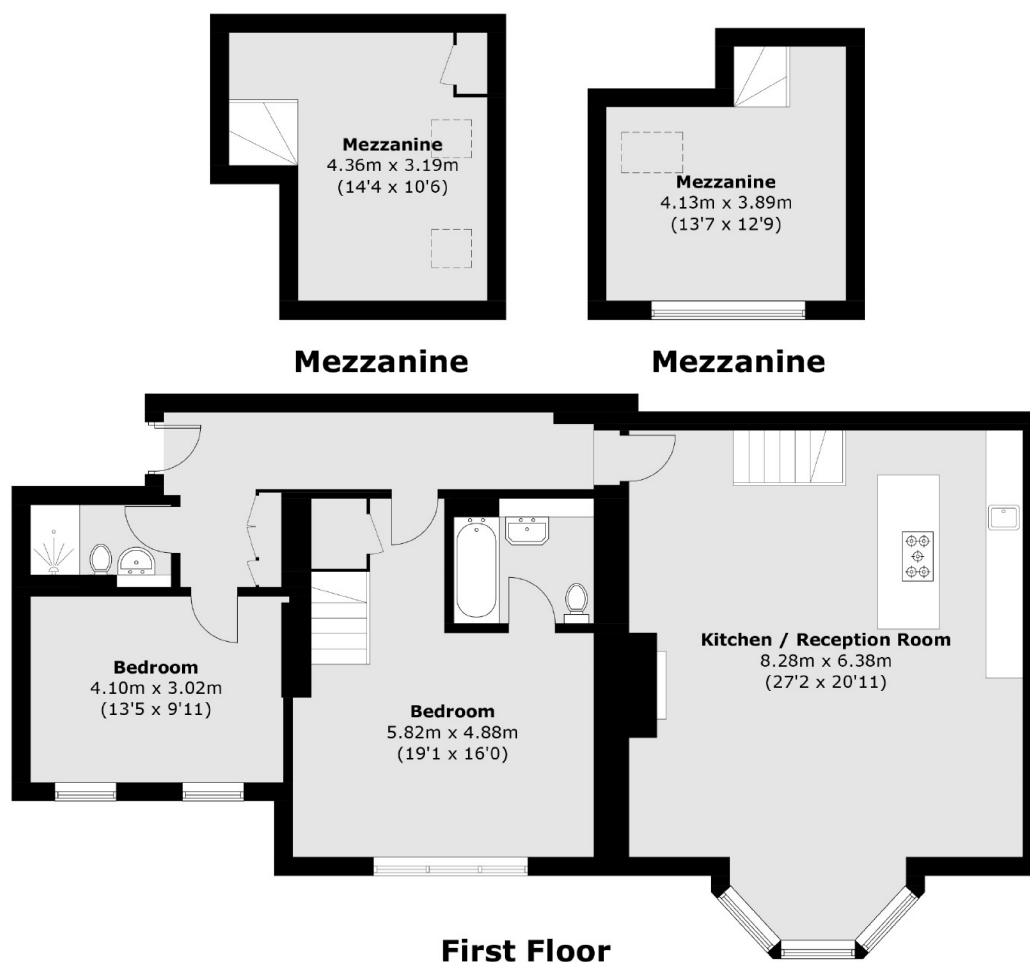
An immaculate two bedroom apartment located within a converted Grade II listed building, offering modern accommodation, off-street parking for two cars, concierge and tranquil communal gardens.

The development overlooks the open spaces of Wimbledon Common, with the shops and amenities of Wimbledon Village and Putney within easy reach.

Features

- Split Level
- Air Conditioning
- Under Floor Heating
- Two Bathrooms
- Grade II Listed Building
- Concierge

Wimbledon Park Side, London, SW19



Total area (approx.): 138.8 sq. m (1,494.0 sq. ft)
(Including Mezzanine)