



Worple Road, SW19

£425,000

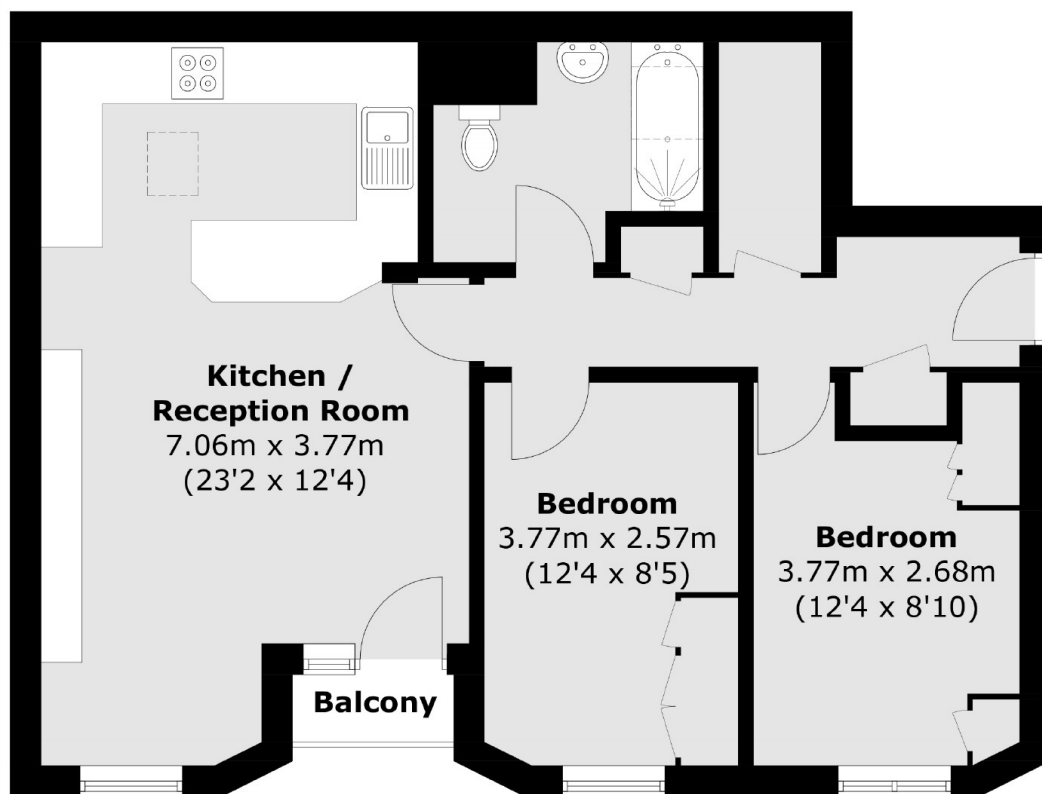
A two double bedroom second floor, purpose built apartment, close to Wimbledon Town Centre. The property has an allocated parking space, communal gardens and no onward chain.

Located just a short distance from central Wimbledon with the district line tube, overground train and tram line, as well as exclusive shops, restaurants, pubs and bars.

Features

- No Onward Chain
- Second Floor
- Communal Gardens
- Central Wimbledon Location
- Allocated Parking Space
- Balcony

Worple Road, London, SW19



Total area (approx.): 61.1 sq. m (657.6 sq. ft)
Balcony (approx.): 1.0 sq. m (10.7 sq. ft)