

Worple Road, SW19

£450,000

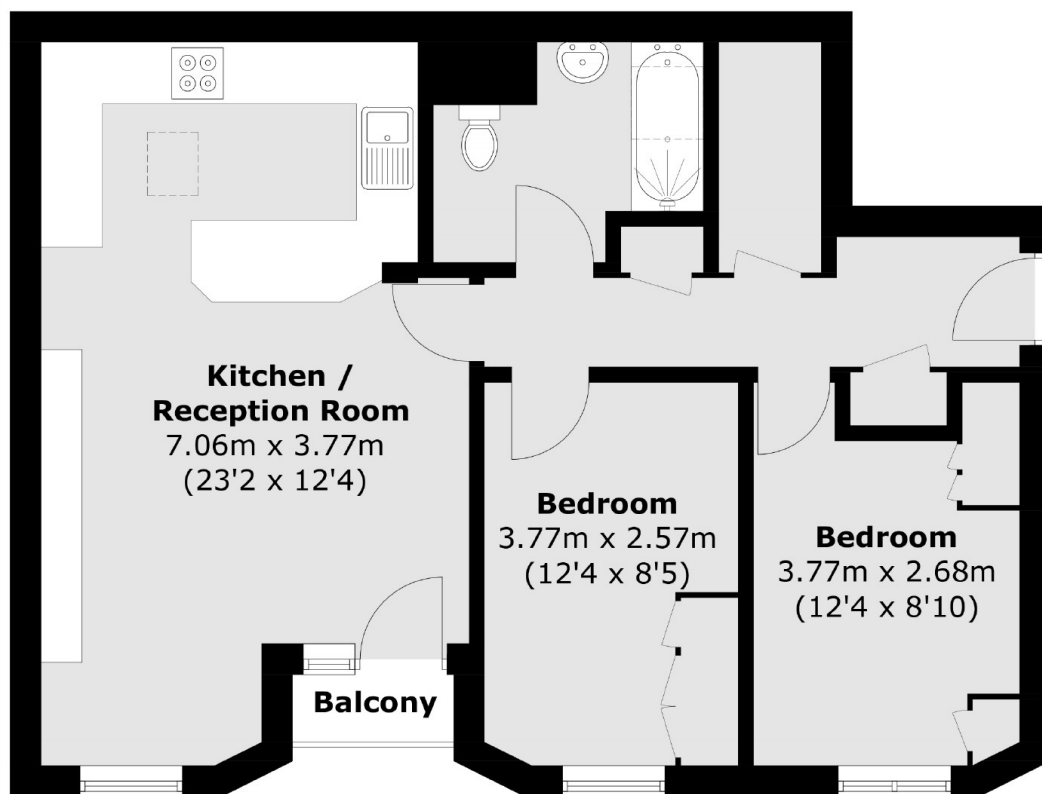
A two double bedroom second floor, purpose built apartment, close to Wimbledon Town Centre. The property has an allocated parking space, communal gardens and no onward chain.

Located just a short distance from central Wimbledon with the district line tube, overground train and tram line, as well as exclusive shops, restaurants, pubs and bars.

Features

- No Onward Chain
- Second Floor
- Communal Gardens
- Central Wimbledon Location
- Allocated Parking Space
- Balcony

Worple Road, London, SW19



Total area (approx.): 61.1 sq. m (657.6 sq. ft)
Balcony (approx.): 1.0 sq. m (10.7 sq. ft)

Dexters

Wimbledon
12 The Broadway
London
SW19 1RF
Sales
020 8545 8580

Energy Rating: . We aim to make our particulars both accurate and reliable. However they are not guaranteed; nor do they form part of an offer or contract. If you require clarification on any points then please contact us, especially if you're traveling some distance to view. Please note that appliances and heating systems have not been tested and therefore no warranties can be given as to their good working order.

 **RICS** | Regulated
Estate Agent
and Letting Agent

[dexters.co.uk](https://www.dexters.co.uk)