



Kingston Road, SW20

£365,000

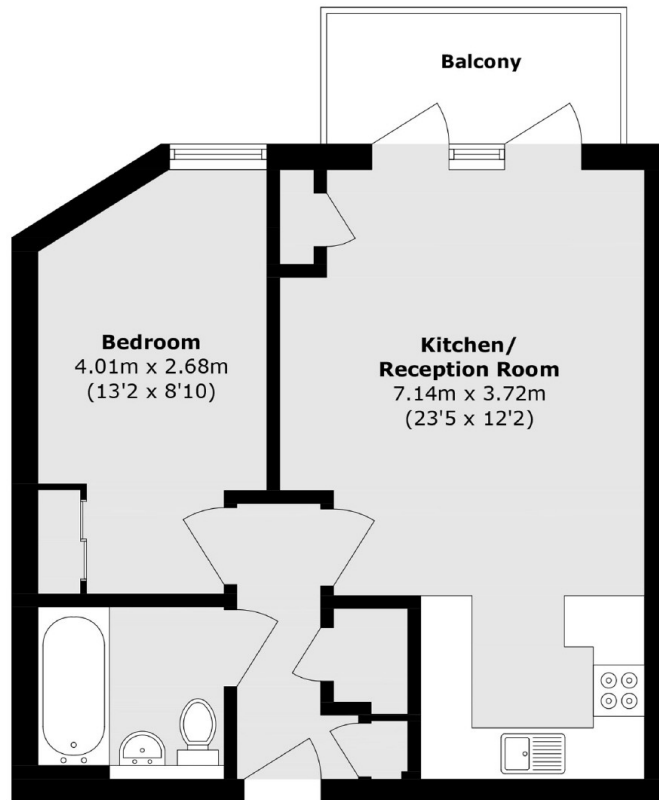
A second floor, one double bedroom apartment located in a secure development, complete with a secured, allocated parking space. The apartment has a balcony overlooking the communal gardens and a lift in the building.

Kingston Road is in a popular location conveniently located for Wimbledon Town Centre and in close proximity to the David Lloyd Club. It is close to the very popular Wimbledon Chase Primary School as well as the green open space of Dundonald Park.

Features

- Large Private Balcony
- Communal Gardens
- Allocated Sheltered Parking
- Secure Gated Access
- Lift In The Building
- No Onward Chain

Kingston Road, London, SW20



Total area (approx.): 49.9 sq. m (537.1 sq. ft)
Balcony area (approx.): 5.3 sq. m (57.0 sq. ft)

Dexters

Wimbledon
12 The Broadway
London
SW19 1RF
Sales
020 8545 8580

Energy Rating: . We aim to make our particulars both accurate and reliable. However they are not guaranteed; nor do they form part of an offer or contract. If you require clarification on any points then please contact us, especially if you're traveling some distance to view. Please note that appliances and heating systems have not been tested and therefore no warranties can be given as to their good working order.

 **RICS** | Regulated
Estate Agent
and Letting Agent

[dexters.co.uk](https://www.dexters.co.uk)