



Pelham Road, SW19

£800,000

One of the finest examples of a fully extended, two double bedroom, two bathroom ground floor gardens flats, within 'The Ministers'. There is an off street parking space which includes an EV charging point and a landscaped south facing garden.

Located on a quiet street just off The Broadway, close to Wimbledon tube station, shops, bars and delicious restaurants. Wimbledon Theatre is just down the road, ideal for an evening performance or matinée!

Features

- Two Double Bedrooms
- Two Bathrooms
- Off Street Parking Space
- Open Kitchen/ Reception
- South Facing Garden
- Share Of Freehold



Pelham Road, SW19

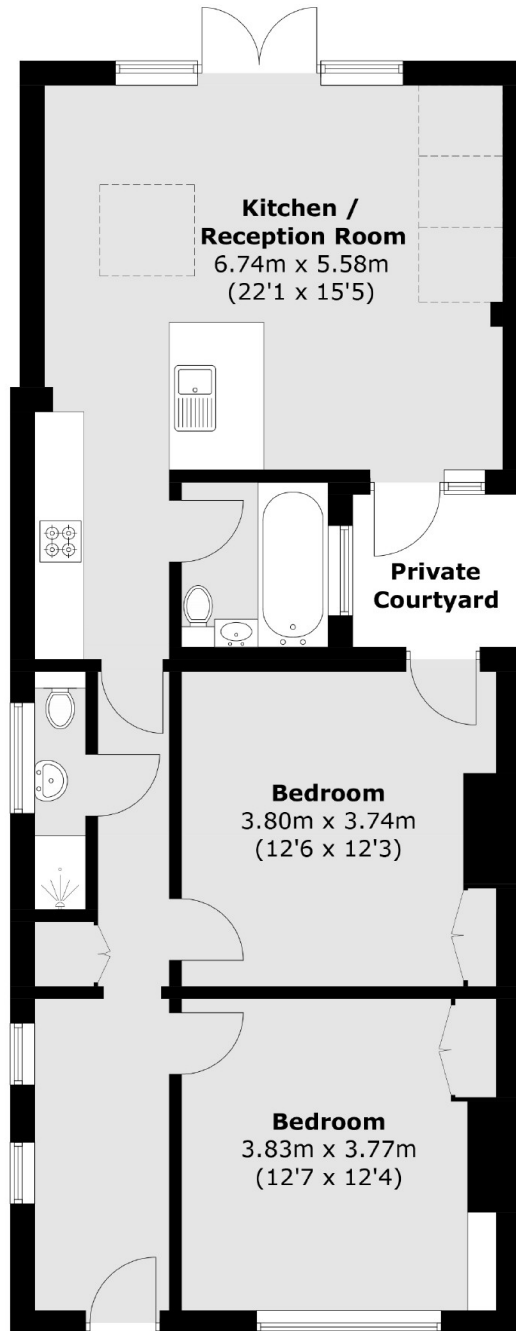
The property has been completely taken back to brick and renovated. The property has its own front door, with a large double bedroom to the front, complete with built in wardrobes and shutters. There is a second double bedroom with built in wardrobes and a beautiful feature of a private courtyard garden, with direct access.

Off the hallway there's a shower room, with the family bathroom just opposite. The rear of the flat has been opened up with an eye for both luxury and convenience, with a full ceiling of glass on one side, combining the kitchen and living space, with direct access via Crittal style French doors.

The garden has been beautifully landscaped, with two tiers, facing south with a mixture of lawn and patio. There is side access to the garden and an off street parking space to the front of the property with a share of Freehold.



Pelham Road, London, SW19



Total area (approx.): 79.4 sq. m (854.6 sq. ft)

Dexters

Wimbledon
12 The Broadway
London
SW19 1RF
Sales
020 8545 8580

Energy Rating: . We aim to make our particulars both accurate and reliable. However they are not guaranteed; nor do they form part of an offer or contract. If you require clarification on any points then please contact us, especially if you're traveling some distance to view. Please note that appliances and heating systems have not been tested and therefore no warranties can be given as to their good working order.

 **RICS** | Regulated
Estate Agent
and Letting Agent

[dexters.co.uk](https://www.dexters.co.uk)